

---

## PLAIN COLOUR

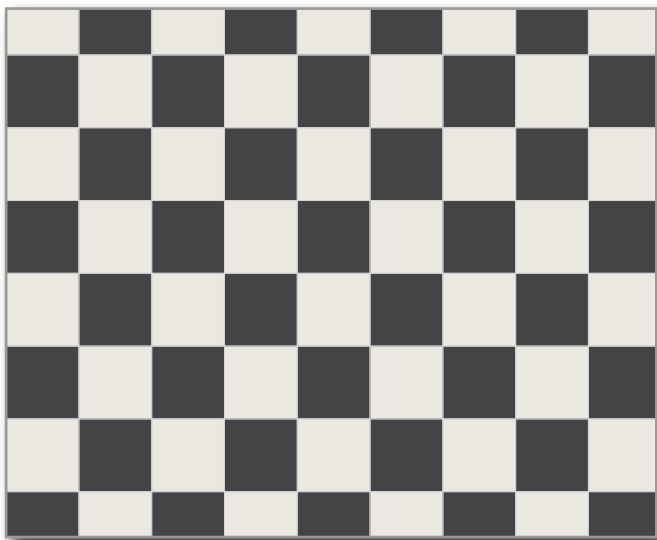
Composition:

- ◆ Black 2x2cm

Assembled on sheets of 30.8x30.8cm

### Straight or Brickbond patterns

Two patterns are possible: the straight pattern as illustrated by the example on the left or the brickbond pattern.



---

## CHECKER

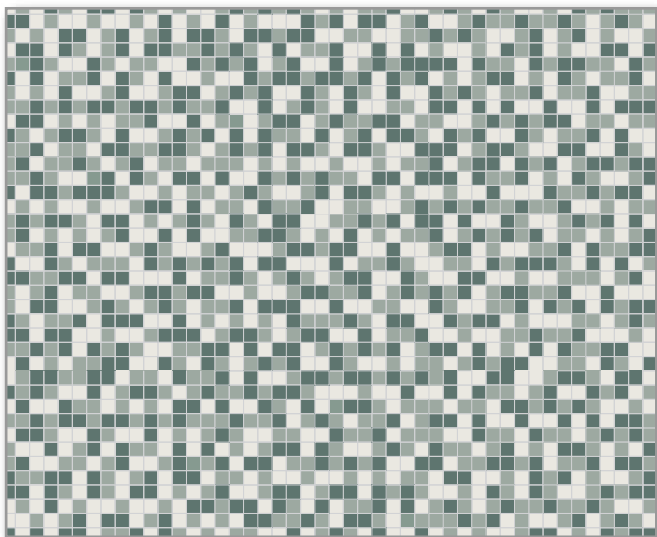
Composition:

- ◆ Black 10x10cm
- ◆ Super White 10x10cm

Loose or assembled on sheets of 30.7x30.7cm

### 45° angle installation

Use an angle of 45° when installing this pattern for an alternative look.



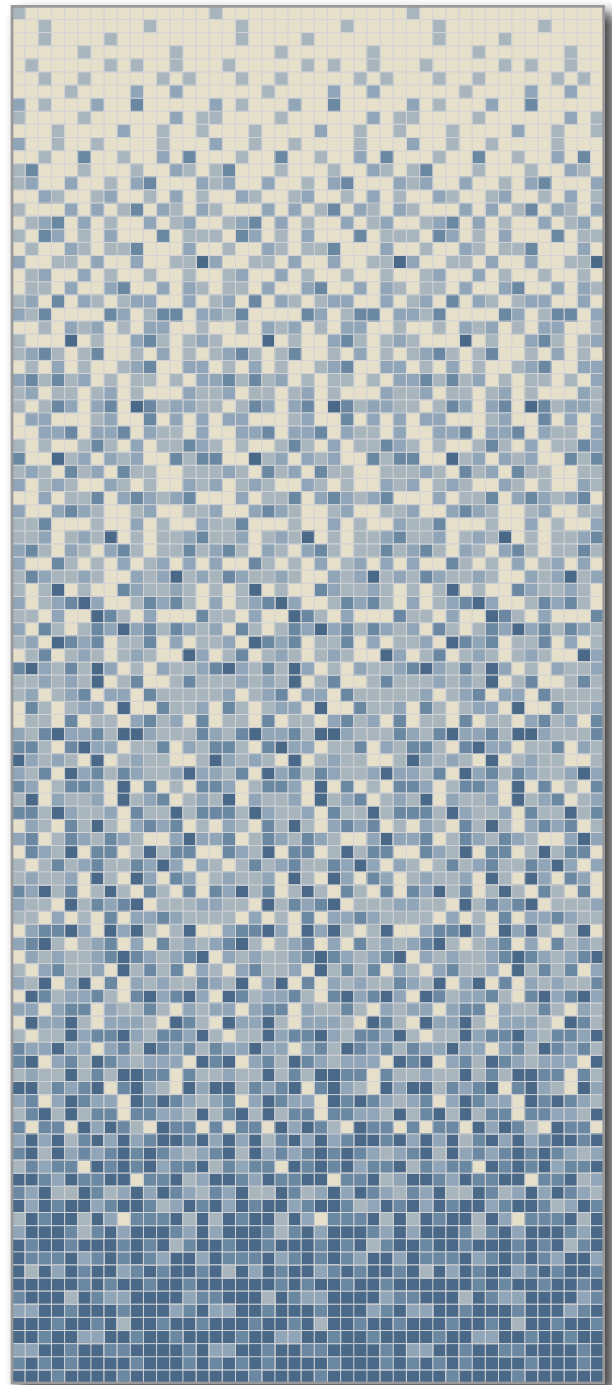
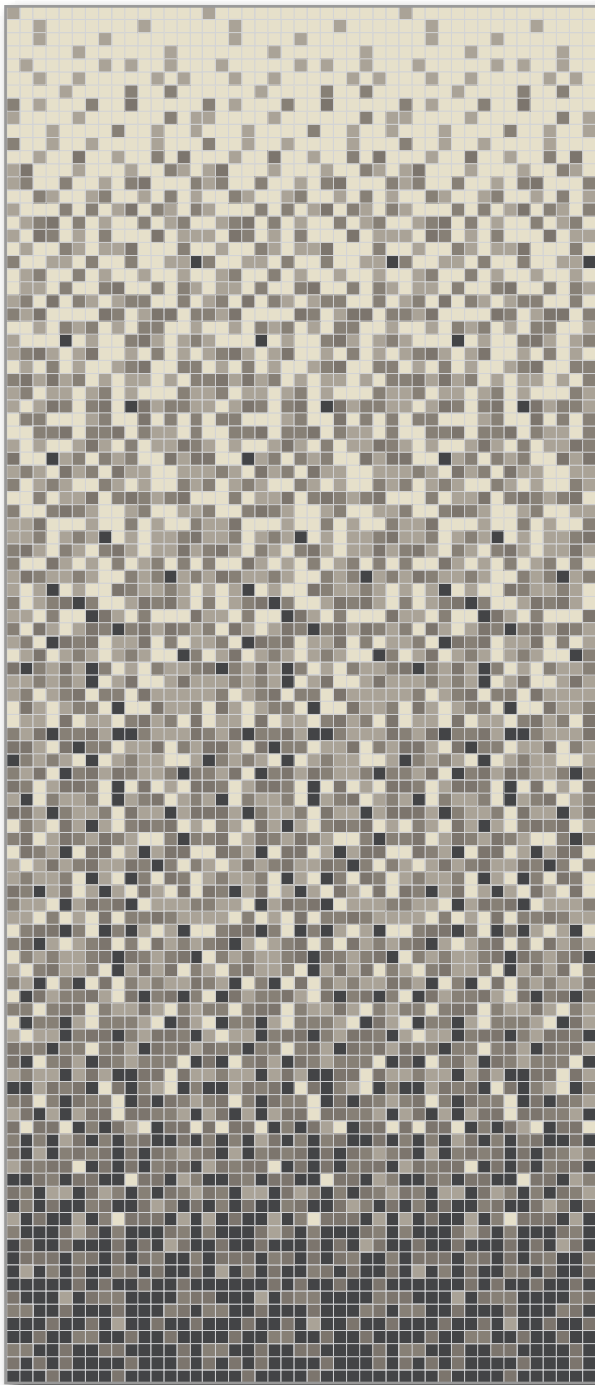
---

## RANDOM MIX

Composition:

- ◆ 34% Super White 2x2cm
- ◆ 33% Pale Green 2x2cm
- ◆ 33% Dark Green 2x2cm

Assembled on sheets of 30.8x30.8cm



---

## 2X2CM GRADIENTS

Composition:

- ◆ Gradient #1 (left-hand side): Black 14% - Charcoal 16% - Grey 19% - Pale Grey 22% - White 29%
- ◆ Gradient #2 (right-hand side): Blue Moon 14% - Dark Blue 16% - Blue 19% - Pale Blue 22% - White 29%

### Customisation of colours

Gradients are tailor-made based on the surface area to be tiled. Their composition can be customised from our colour range. Other standard models are available on request.