

serena



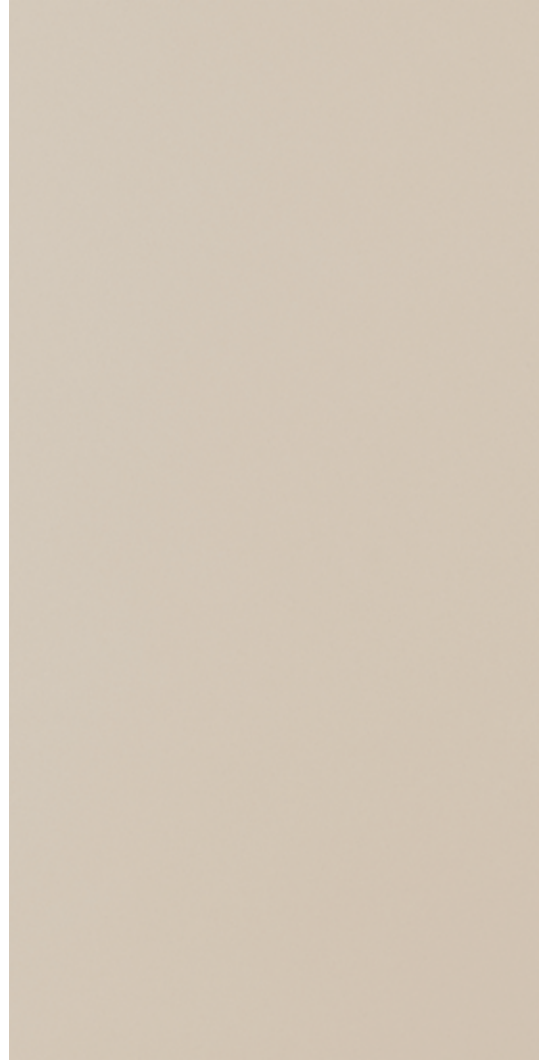


# serena

Mat | Matt  
Parlak | Polished



**Renk:** Super White | **Color:** Super White  
**Kenar:** Pahlı | **Edge:** Chamfered



**Renk:** Bej | **Color:** Beige  
**Kenar:** Pahlı | **Edge:** Chamfered

\* Sadece mat ürünlerde geçerlidir. | \* Only valid for matte products. | \* Nur gültig für Produkte in matt.  
\* Valido solo per i prodotti opachi. | \* Solo válido para productos mates. | \* Только для изделий с матовой поверхностью.

# serena

Mat | Matt  
Parlak | Polished



**Renk:** | **Color:**  
Gri 441 | Grey 441  
**Kenar:** | **Edge:**  
Pahli | Chamfered



**Renk:** | **Color:**  
Kahve 114 | Brown 114  
**Kenar:** | **Edge:**  
Pahli | Chamfered

\* Sadece mat ürünlerde geçerlidir. | \* Only valid for matte products. | \* Nur gültig für Produkte in matt.  
\* Valido solo per i prodotti opachi. | \* Solo válido para productos mates. | \* Только для изделий с матовой поверхностью.

# serena

Mat | Matt  
Parlak | Polished



**Renk:** | **Color:**  
Gri 443 | Grey 443  
**Kenar:** | **Edge:**  
Pahli | Chamfered



**Renk:** | **Color:**  
Kahve 116 | Brown 116  
**Kenar:** | **Edge:**  
Pahli | Chamfered

\* Sadece mat ürünlerde geçerlidir. | \* Only valid for matte products. | \* Nur gültig für Produkte in matt.  
\* Valido solo per i prodotti opachi. | \* Solo válido para productos mates. | \* Только для изделий с матовой поверхностью.

# serena

Mat | Matt  
Parlak | Polished



**Renk:** | **Color:**  
Kahve 120 | Brown 120  
**Kenar:** | **Edge:**  
Pahlı | Chamfered



**Renk:** | **Color:**  
Cotto | Cotto  
**Kenar:** | **Edge:**  
Pahlı | Chamfered

\* Sadece mat ürünlerde geçerlidir. | \* Only valid for matte products. | \* Nur gültig für Produkte in matt.  
\* Valido solo per i prodotti opachi. | \* Solo válido para productos mates. | \* Только для изделий с матовой поверхностью.

# serena

Mat | Matt  
Parlak | Polished



**Renk:** | **Color:**  
Gri 445 | Grey 445  
**Kenar:** | **Edge:**  
Pahlı | Chamfered

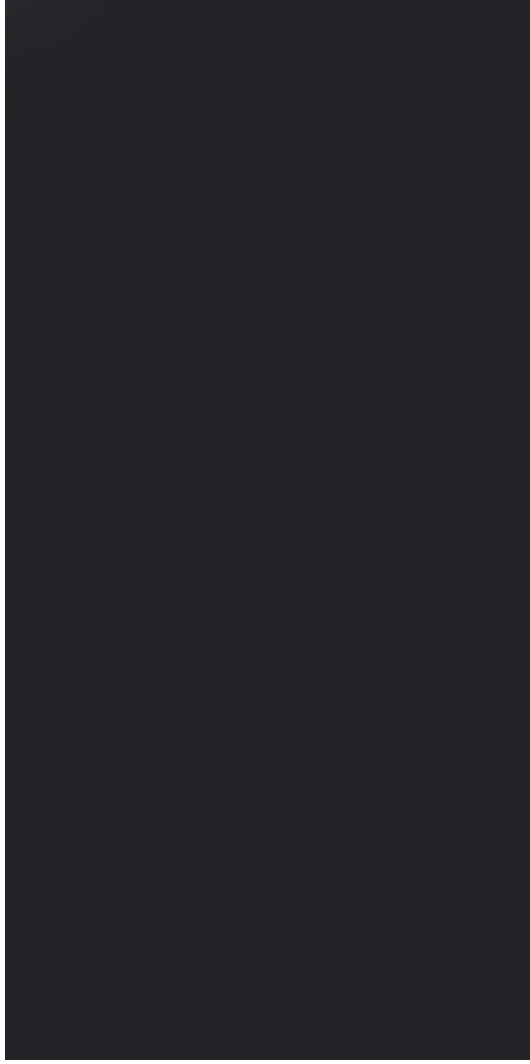


**Renk:** | **Color:**  
Kahve 110 | Brown 110  
**Kenar:** | **Edge:**  
Pahlı | Chamfered

\* Sadece mat ürünlerde geçerlidir. | \* Only valid for matte products. | \* Nur gültig für Produkte in matt.  
\* Valido solo per i prodotti opachi. | \* Solo válido para productos mates. | \* Только для изделий с матовой поверхностью.

# serena

Mat | Matt  
Parlak | Polished



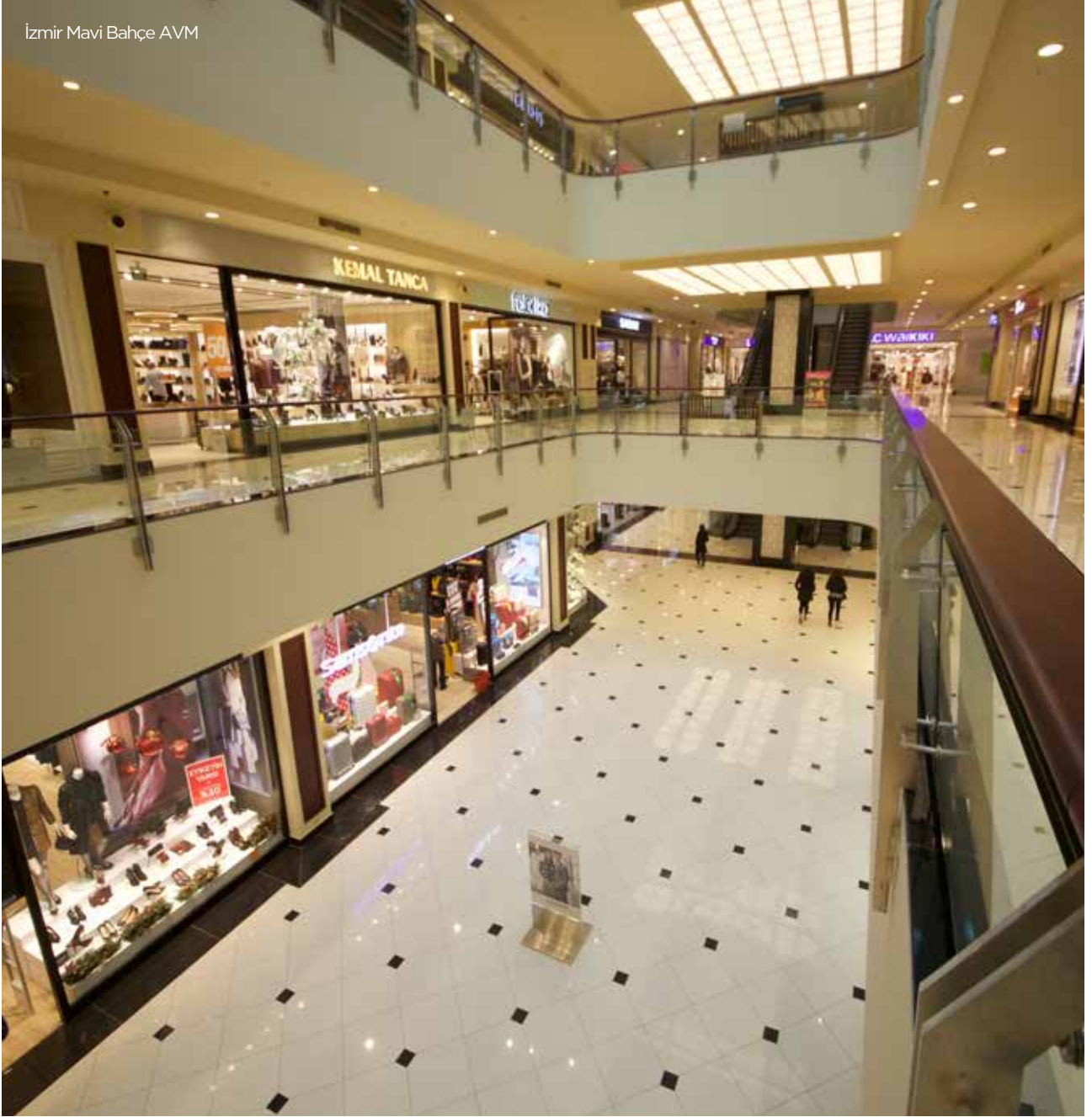
**Renk:** Super Black | **Color:** Super Black  
**Kenar:** Pahlı | **Edge:** Chamfered

\* Sadece mat ürünlerde geçerlidir. | \* Only valid for matte products. | \* Nur gültig für Produkte in matt.  
\* Valido solo per i prodotti opachi. | \* Solo válido para productos mates. | \* Только для изделий с матовой поверхностью.



# serena

İzmir Mavi Bahçe AVM



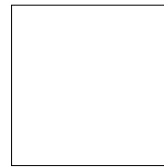
- \* 33x33 ve 40x40 mat yüzey bitişi pahsızdır.
- \* 33x33 and 40x40 matt surface treatments are chamfered.
- \* 33x33 und 40x40 matten Oberflächenfinish ungefast.
- \* La rifinitura opaca 33x33 e 40x40 è smussata.
- \* El terminado mate 33x33 y 40x40 no tiene bisel.
- \* 33x33 и 40x40 с матовой поверхностью без фаски.



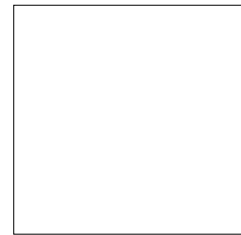
33x33 cm  
13"x13"



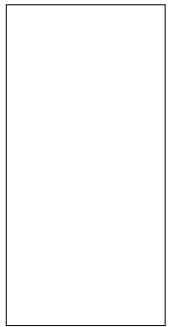
30x60 cm  
12"x24"



60x60 cm  
24"x24"



90x90 cm  
35"x35"



60x120 cm  
24"x48"



EBAT   SIZE cm   inch	NET EBAT WORKING SIZE mm	KALINLIK THICKNESS mm	KALINLIK THICKNESS inch	TİP   TYPE	ADET   KUTU PCS.   BOX	m <sup>2</sup>   KUTU m <sup>2</sup>   BOX	KUTU   PALET BOX   PALLET	m <sup>2</sup>   PALET m <sup>2</sup>   PALLET	kg   PALET kg   PALLET
33x33* 13"x13"	332x332	8.0	0,31"	MAT   MATT	9	0.99	56	55.44	1,032.0
33x33* 13"x13"	330x330	7.5	0,30"	PARLAK POLISHED	9	0.98	56	54.88	949.0
30x60 12"x24"	302x604	8.5	0,33"	MAT   MATT	9	1.64	32	52.48	1,036.5
30x60 12"x24"	300x600	8.0	0,31"	PARLAK POLISHED	9	1.62	32	51.84	950.0
60x60 24"x24"	604x604	10.0	0,39"	MAT   MATT	4	1.46	30	43.80	1,023.4
60x60 24"x24"	600x600	9.0	0,35"	PARLAK POLISHED	4	1.44	30	43.20	940.0
90x90** 35"x35"	905x905	10.0	0,39"	MAT   MATT	2	1.64	20	32.80	981.2
90x90** 35"x35"	900x900	9.0	0,35"	PARLAK POLISHED	2	1.62	20	32.80	756.0
90x90** 35"x35"	900x900***	10.0	0,39"	MAT   MATT	2	1.64	20	32.80	781.2
90x90** 35"x35"	890x890***	9.0	0,35"	PARLAK POLISHED	2	1.62	20	32.80	756.0
60x120 24"x48"	604x1208	10.0	0,39"	MAT   MATT	2	1.46	22	32.12	779.0
60x120 24"x48"	600x1200	9.0	0,35"	PARLAK POLISHED	2	1.44	24	34.56	791.0

\* İşaretli ebatlar sadece Düz Bej rengi olarak üretilmektedir.  
Marked sizes are available only in Plain Beige color.

\*\* İşaretli ebat sadece Düz Bej, Super white ve Super black renkleri olarak üretilmektedir.  
Marked size is available only in Plain Beige, Super white and Super black colors.

\*\*\* SUPER WHITE

Teknik bilgiler ve diğer detaylar için sayfa 334'e bakınız. | For technical information and other details, check page 334. | Technische Informationen und weitere Details finden Sie auf Seite 334. Per informazioni di carattere tecnico e altri dettagli, controllare pagina 334. | Para obtener información técnica y otros detalles, consulte la página 334. | Техническую и прочую информацию см. на странице 334.