

DAK63652  
PEI 5 ○ 82 / m<sup>2</sup>  
mat | matt



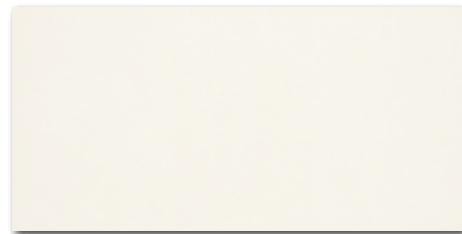
DAK63653  
PEI 5 ○ 82 / m<sup>2</sup>  
mat | matt



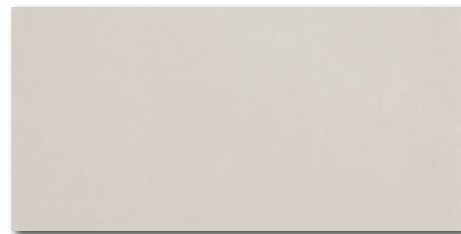
DAK63654  
PEI 5 ○ 82 / m<sup>2</sup>  
mat | matt



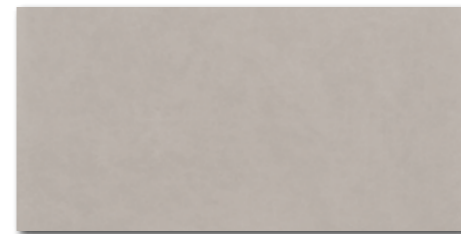
DAK63655  
PEI 4 ○ 82 / m<sup>2</sup>  
mat | matt



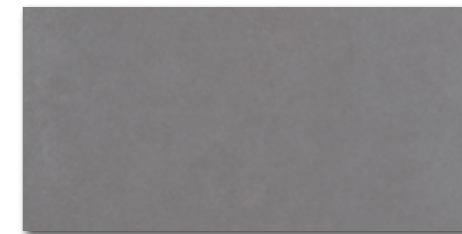
DAKSE652  
PEI 5 ○ 78 / m<sup>2</sup>  
mat | matt  
slonová kost / ivory / kość słoniowa  
слоновая кость / elefántcsont / marfil



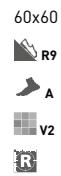
DAKSE653  
PEI 5 ○ 78 / m<sup>2</sup>  
mat | matt  
světle šedá / light grey / jasnoszara  
светло-серый / világosszürke / gris claro



DAKSE654  
PEI 5 ○ 78 / m<sup>2</sup>  
mat | matt  
šedá / grey / szara / серый / szürke / gris



DAKSE655  
PEI 4 ○ 78 / m<sup>2</sup>  
mat | matt  
tmavě šedá / dark grey / ciemnoszara  
темно-серый / sötétszürke / gris oscuro



DAK63658  
PEI 5 ○ 82 / m<sup>2</sup>  
mat | matt



DAK63656  
PEI 4 ○ 82 / m<sup>2</sup>  
mat | matt



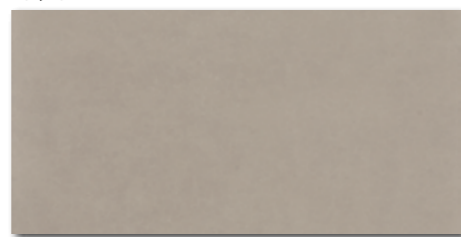
DAK63657  
PEI 4 ○ 82 / m<sup>2</sup>  
mat | matt



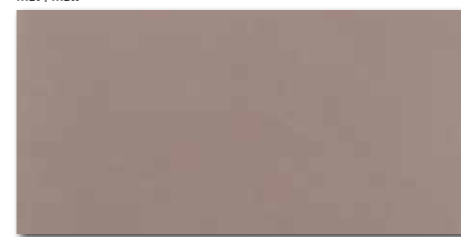
DAK63685  
PEI 4 ○ 82 / m<sup>2</sup>  
mat | matt



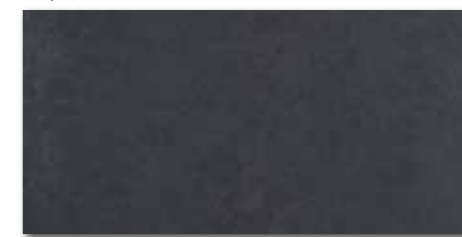
DAKSE658  
PEI 5 ○ 78 / m<sup>2</sup>  
mat | matt  
světle béžová / light beige / jasnobezowa  
светло-бежевый / világosbézs / beige claro



DAKSE656  
PEI 4 ○ 78 / m<sup>2</sup>  
mat | matt  
béžovo-šedá / beige-grey / beżowo-szary  
бежевый-серый / bézs-szürke / beige-gris



DAKSE657  
PEI 4 ○ 78 / m<sup>2</sup>  
mat | matt  
hnědo-šedá / brown-grey / brązowoszara / коричневый-серый  
szürke-barna / gris-marrón



DAKSE685  
PEI 4 ○ 78 / m<sup>2</sup>  
mat | matt  
černá / black / czarna / черный / fekete / negro

výrobek / product



dlaždice / floor tile	60x60	598x598x10	EN 14411:2016, annex G Bla GL	3	2,8	1,08	32	34,56	24,9	23,0	820
dlaždice / floor tile	30x60	298x598x10	EN 14411:2016, annex G Bla GL	6	5,6	1,08	40	43,20	23,2	21,5	954

Doporučené skladby formátů viz str. 325. | Recommended combinations of modular sizes see page 325. | Zalecane ułożenie modułowych formatów na stronie 325. | Рекомендуемый состав модульных форматов, см. стр. 325. | Composiciones de formatos recomendadas - vea la página n° 325.



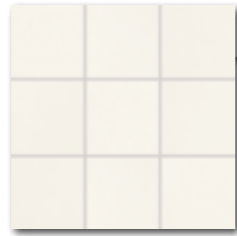
10x10  
30x30  
45x45

v2

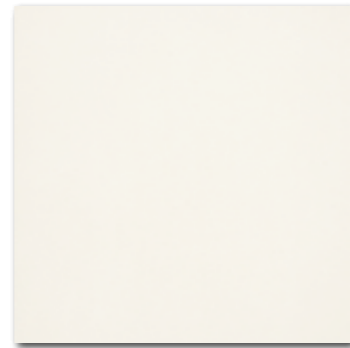


DDM06652 (SET)  
PEI 5  $\odot$  72 / set  
mat | matt | R10 | B

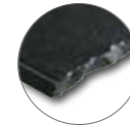
slonová kost / ivory / kość słoniowa  
слоновая кость / elefántcsont / marfil



DAK12652 (news)  
PEI 5  $\odot$  90 / m<sup>2</sup>  
mat | matt | R10 | B



DAK44652  
PEI 5  $\odot$  74 / m<sup>2</sup>  
mat | matt | R9 | A

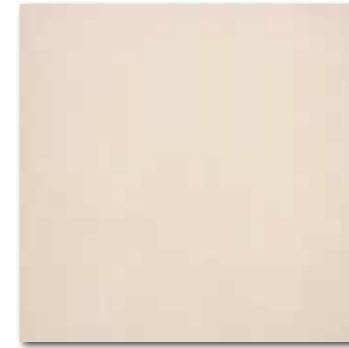


DDM06658 (SET)  
PEI 5  $\odot$  72 / set  
mat | matt | R10 | B

světle béžová / light beige / jasnobeżowa  
светло-бежевый / világosbézs / beige claro



DAK12658 (news)  
PEI 5  $\odot$  90 / m<sup>2</sup>  
mat | matt | R10 | B



DAK44658  
PEI 5  $\odot$  74 / m<sup>2</sup>  
mat | matt | R9 | A



45x45

R9

A

v2

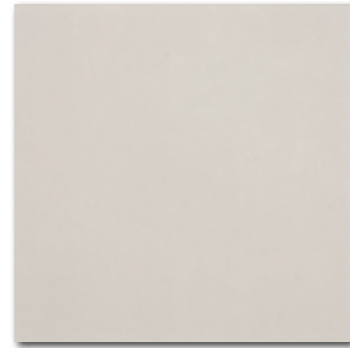


DDM06653 (SET)  
PEI 5  $\odot$  72 / set  
mat | matt | R10 | B

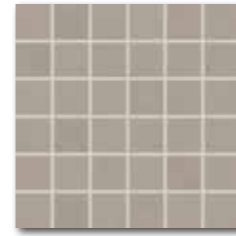
světle šedá / light grey / jasnoszara  
светло-серый / világosszürke / gris claro



DAK12653 (news)  
PEI 5  $\odot$  90 / m<sup>2</sup>  
mat | matt | R10 | B



DAK44653  
PEI 5  $\odot$  74 / m<sup>2</sup>  
mat | matt | R9 | A



DDM06656 (SET)  
PEI 4  $\odot$  72 / set  
mat | matt | R10 | B

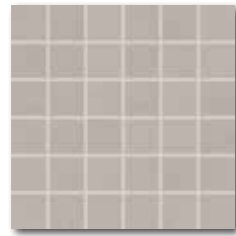
béžovo-šedá / beige-grey / beżowo-szary  
бежевый-серый / bézs-szürke / beige-gris



DAK12656 (news)  
PEI 4  $\odot$  90 / m<sup>2</sup>  
mat | matt | R10 | B



DAK44656  
PEI 4  $\odot$  74 / m<sup>2</sup>  
mat | matt | R9 | A



DDM06654 (SET)  
PEI 5  $\odot$  72 / set  
mat | matt | R10 | B

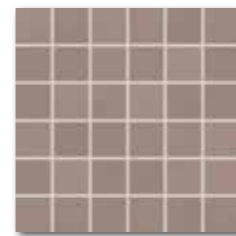
šedá / grey / szara / серый / szürke / gris



DAK12654 (news)  
PEI 5  $\odot$  90 / m<sup>2</sup>  
mat | matt | R10 | B



DAK44654  
PEI 5  $\odot$  74 / m<sup>2</sup>  
mat | matt | R9 | A

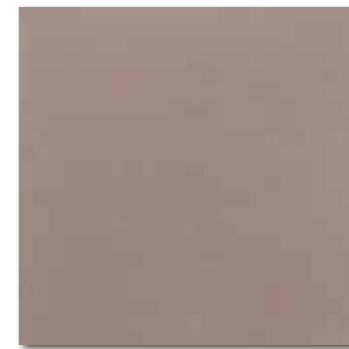


DDM06657 (SET)  
PEI 4  $\odot$  72 / set  
mat | matt | R10 | B

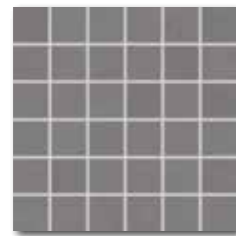
hnědo-šedá / brown-grey / brązowoszara  
коричневый-серый / szürke-barna  
gris-marrón



DAK12657 (news)  
PEI 4  $\odot$  90 / m<sup>2</sup>  
mat | matt | R10 | B

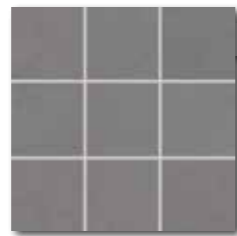


DAK44657  
PEI 4  $\odot$  74 / m<sup>2</sup>  
mat | matt | R9 | A



DDM06655 (SET)  
PEI 4  $\odot$  72 / set  
mat | matt | R10 | B

tmavě šedá / dark grey / ciemnoszara  
темно-серый / sötétszürke / gris oscuro



DAK12655 (news)  
PEI 4  $\odot$  90 / m<sup>2</sup>  
mat | matt | R10 | B



DAK44655  
PEI 4  $\odot$  74 / m<sup>2</sup>  
mat | matt | R9 | A



DDM06685 (SET)  
PEI 4  $\odot$  72 / set  
mat | matt | R10 | B

černá / black / czarna / черный  
fekete / negro



DAK12685 (news)  
PEI 4  $\odot$  90 / m<sup>2</sup>  
mat | matt | R10 | B



DAK44685  
PEI 4  $\odot$  74 / m<sup>2</sup>  
mat | matt | R9 | A

výrobek / product



výrobek / product	L	W	EN	T	kg/m <sup>2</sup>	m <sup>2</sup>	m <sup>2</sup>	kg	kg/m <sup>2</sup>	brutto kg
mozaika set 30x30 cm / mosaic sheet 30x30 cm	5x5	48x48x10	STO E. 030 - 049913	3	11	0,27	-	5,8	21,5	-
dlaždice / floor tile	10x10	98x98x10	EN 14411:2016, annex G B1a GL	10	11	0,91	56	50,96	19,6	21,5
dlaždice / floor tile	45x45	445x445x10	EN 14411:2016, annex G B1a GL	6	5	1,21	26	31,46	25,0	20,7



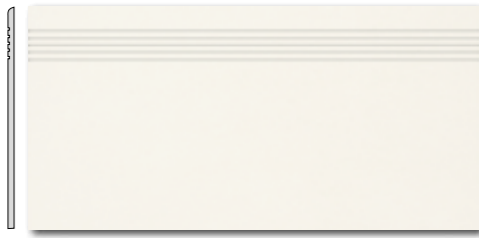
30x60

R9

A

V2

R



DCPSE652  
PEI 5 ○ 72 / ks  
mat | matt

60x9,5

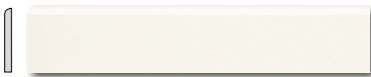
R



DSAS4652  
○ 58 / ks  
mat | matt

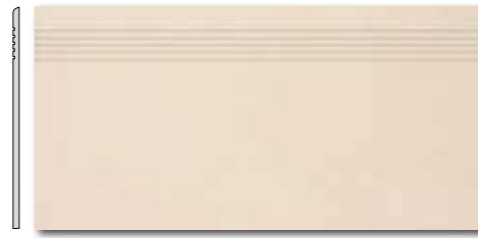
45x8,5

R



DSAPM652  
○ 56 / ks  
mat | matt

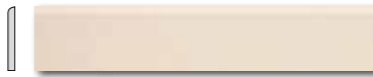
slonová kost / ivory / kość stoniowa  
слоновая кость / elefántcsont / marfil



DCPSE658  
PEI 5 ○ 72 / ks  
mat | matt



DSAS4658  
○ 58 / ks  
mat | matt

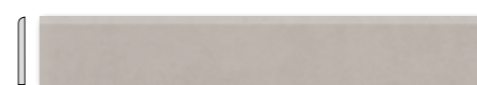


DSAPM658  
○ 56 / ks  
mat | matt

světle béžová / light beige / jasno-bežowa  
светло-бежевый / világosbézs / beige claro



DCPSE654  
PEI 5 ○ 72 / ks  
mat | matt



DSAS4654  
○ 58 / ks  
mat | matt



DSAPM654  
○ 56 / ks  
mat | matt

šedá / grey / szara / серый / szürke / gris



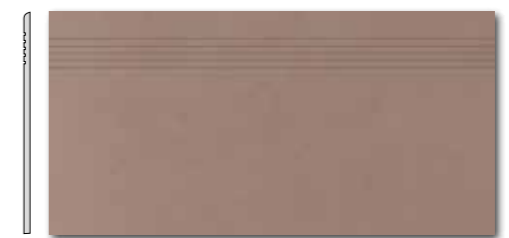
30x60

R9

A

V2

R



DCPSE657  
PEI 4 ○ 72 / ks  
mat | matt

60x9,5

R



DSAS4657  
○ 58 / ks  
mat | matt

45x8,5

R



DSAPM657  
○ 56 / ks  
mat | matt

hnědo-šedá / brown-grey / brązowoszara / коричневый-серый  
szürke-barna / gris-marrón

30x60

R9

A

V2

R



DCPSE653  
PEI 5 ○ 72 / ks  
mat | matt

60x9,5

R



DSAS4653  
○ 58 / ks  
mat | matt

45x8,5

R



DSAPM653  
○ 56 / ks  
mat | matt

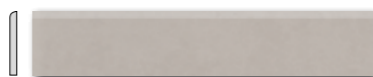
světle šedá / light grey / jasnoszara  
светло-серый / világosszürke / gris claro



DCPSE656  
PEI 4 ○ 72 / ks  
mat | matt



DSAS4656  
○ 58 / ks  
mat | matt

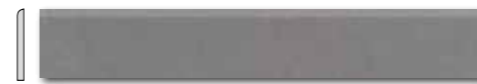


DSAPM654  
○ 56 / ks  
mat | matt

běžovo-šedá / beige-grey / beżowo-szary  
бежевый-серый / bézs-szürke / beige-gris



DCPSE655  
PEI 4 ○ 72 / ks  
mat | matt



DSAS4655  
○ 58 / ks  
mat | matt



DSAPM655  
○ 56 / ks  
mat | matt

tmavě šedá / dark grey / ciemnoszara  
темно-серый / sötétszürke / gris oscuro

30x60

R9

A

V2

R



DCPSE685  
PEI 4 ○ 72 / ks  
mat | matt

60x9,5

R



DSAS4685  
○ 58 / ks  
mat | matt

45x8,5

R



DSAPM685  
○ 56 / ks  
mat | matt

černá / black / czarna / черный / fekete / negro

výrobek / product



EN



ks/m<sup>2</sup>

m<sup>2</sup>



kg/m<sup>2</sup>

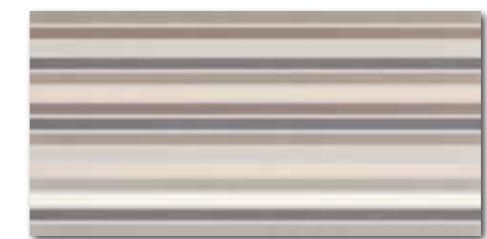
brutto kg

výrobek / product	cm	mm	EN	mm	ks/m <sup>2</sup>	m <sup>2</sup>	kg	kg/m <sup>2</sup>	brutto kg
schodovka / step tile	30x60	298x598x10	STO ě. 030 - 049916	6	5,6	1,08	40	-	23,2
sokl / skirting plinth	60x9,5	598x95x10	STO ě. 030 - 049916	13	17,5	0,74	-	-	15,9
sokl / skirting plinth	45x8,5	445x85x10	STO ě. 030 - 049916	20	26,1	0,77	-	-	15,9
mozaika set 30x30 cm / mosaic sheet 30x30 cm	2,5x2,5	23x23x10	STO ě. 030 - 049913	3	11	0,27	-	-	5,8
dekar / decar	30x60	298x598x10	EN 14411:2016, annex G B1a GL	4	5,6	0,72	-	-	15,5



DDM0U001 (SET)  
PEI 4 ○ 82 / set  
mat | matt | R10 | B

vícebarevná / multicoloured / kolorowa  
многочетный / többszínű / multicolor



DDPSE001 (SET)  
PEI 4 ○ 78 / set  
mat | matt | R10 | A

30x30

30x60

V4

R