



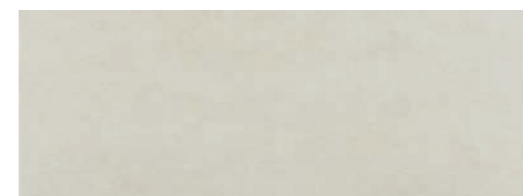
**Rvto. / Wall / Rvtm.:** At. Andros Taupe 25x70 - At. Rlv. Andros Taupe 25x70  
**Pvto. / Floor / Sol:** At. Aren Taupe 20x120

## AT ANDROS RLV

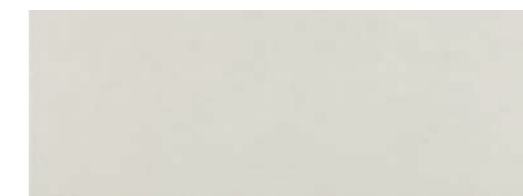
25x70 cm  
 9,84"x27,55"



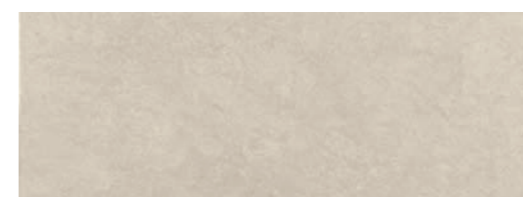
**Nota: No se admitirán pedidos de picking.**  
 Note: Those products are sold only by full pallets.  
 Note: Pas de contremarque, uniquement à la palette.



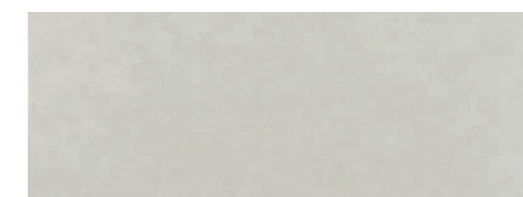
●At.Andros Arena 25x70 M08 2.185.17.5237



●At.Andros Perla 25x70 M08 2.185.37.5237



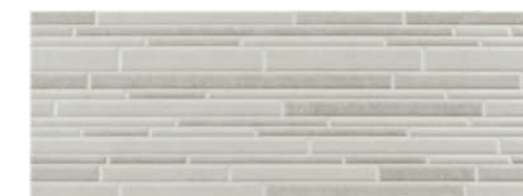
●At.Andros Taupe 25x70 M08 2.185.285.5237



●At.Andros Gris 25x70 M08 2.185.2.5237



●At.Rlv.Andros Taupe 25x70 M08 2.185.285.5238



●At.Rlv.Andros Gris 25x70 M08 2.185.2.5238



●Mold.Metal Bronce Brillo 2x70 P58 5.867.804.2465



●Mold.Metal Plata Brillo 2x70 P49 5.867.804.2466

El modelo AT. RLV. ANDROS tiene una posición determinada.  
 The AT. RLV. ANDROS model has a fixed final position.  
 Le modèle AT. RLV. ANDROS posé dans une position déterminée.

●Mold.Metal Plata Mate 2x70 P49 5.867.803.2466

Empaquetado / Packaging / Emballage

| formato | pz/cj | m <sup>2</sup> /cj | m <sup>2</sup> /pl | cj/pl | kg/cj | kg/pl   |
|---------|-------|--------------------|--------------------|-------|-------|---------|
| 25x70   | 9     | 1,58               | 101,12             | 64    | 24,64 | 1596,96 |
| 2x70    | 28    |                    |                    |       | 6,90  |         |