

TARTAN

ORNAMENTA.COM

THE SCOTTISH
FABRIC SQUARES
60X60 //
GRES PORCELAIN //
RECTIFIED //

ORNAMENTA®

FASHION MOOD

*add a Scottish touch
to your wardrobe*

SUMMARY

COLOURS

pag. 4 | 5

THE COLLECTION

pag. 6 | 7

WHITE | PEARL

pag. 8 | 11

TAUPE

pag. 12 | 13

ASHGREY

pag. 14 | 17

GREY

pag. 18 | 21

BLACK

pag. 22 | 23

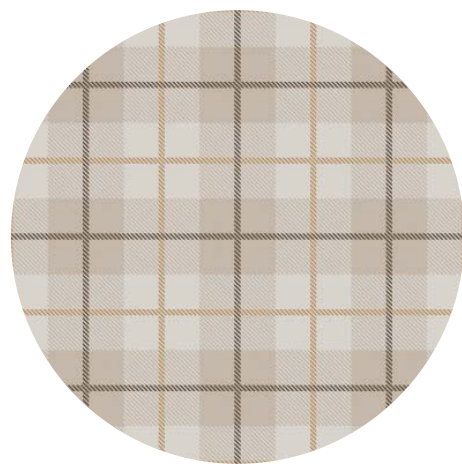
TECHNICAL INFO

pag. 25 | 29

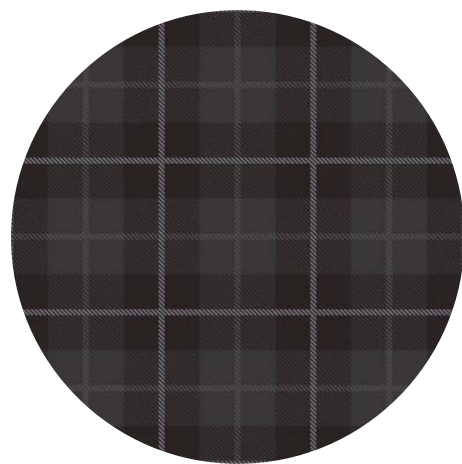
CREDITS

pag. 30

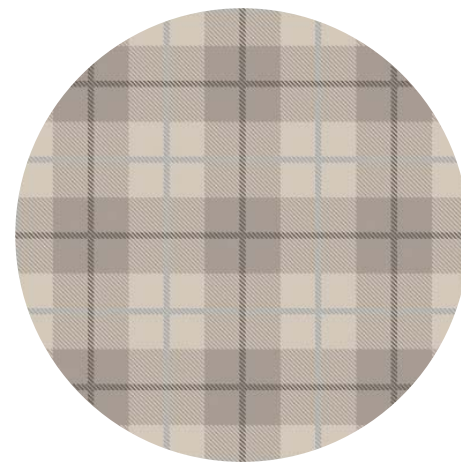
ORNAMENTA.COM



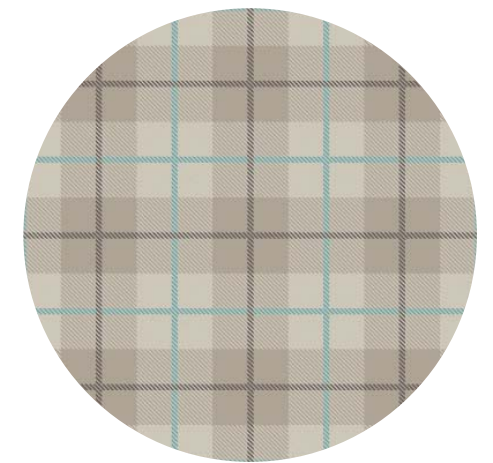
white



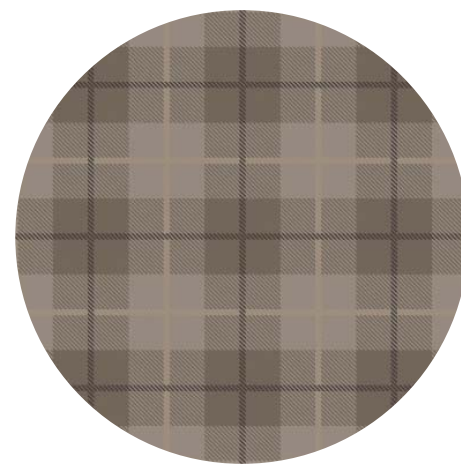
black



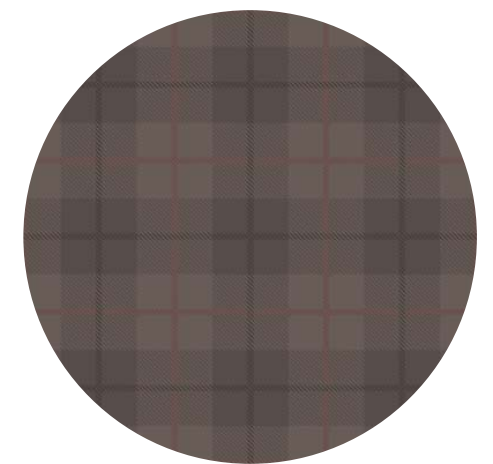
ivory



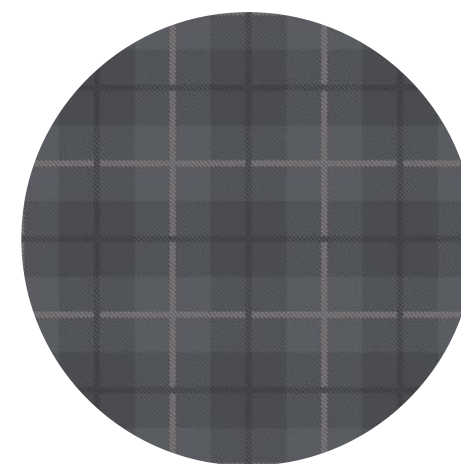
pearl



taupe



ashgrey



grey

*I colori e le caratteristiche estetiche dei materiali illustrati nel presente catalogo sono da ritenersi puramente indicativi.
Colours and aesthetical features of the materials as illustrated in this catalogue are to be regarded as mere indications.

TARTAN

TIMELESS ELEGANCE

IL TESSUTO A QUADRETTI NATO NEGLI HIGHLAND SCOZZESI, SINONIMO DI APPARTENENZA AD UN CLAN, DIVENTA UNA NUOVA ISPIRAZIONE.

THE FABRIC SQUARES BORN IN THE SCOTTISH HIGHLANDS, A SYNONYM OF BELONGING TO A CLAN, BECOMES THE STAND-OUT MOTIF OF THE SEASON,



TARTAN IVORY TN6060I

WHITE



TARTAN WHITE TN6060W

Tra i "must have" del momento, declinato in 7 cromie abbinabili ai nostri BASICS in cui la presenza di un colore acceso rompe la monotonia del colore di fondo dandogli contemporaneità e personalità.

PEARL

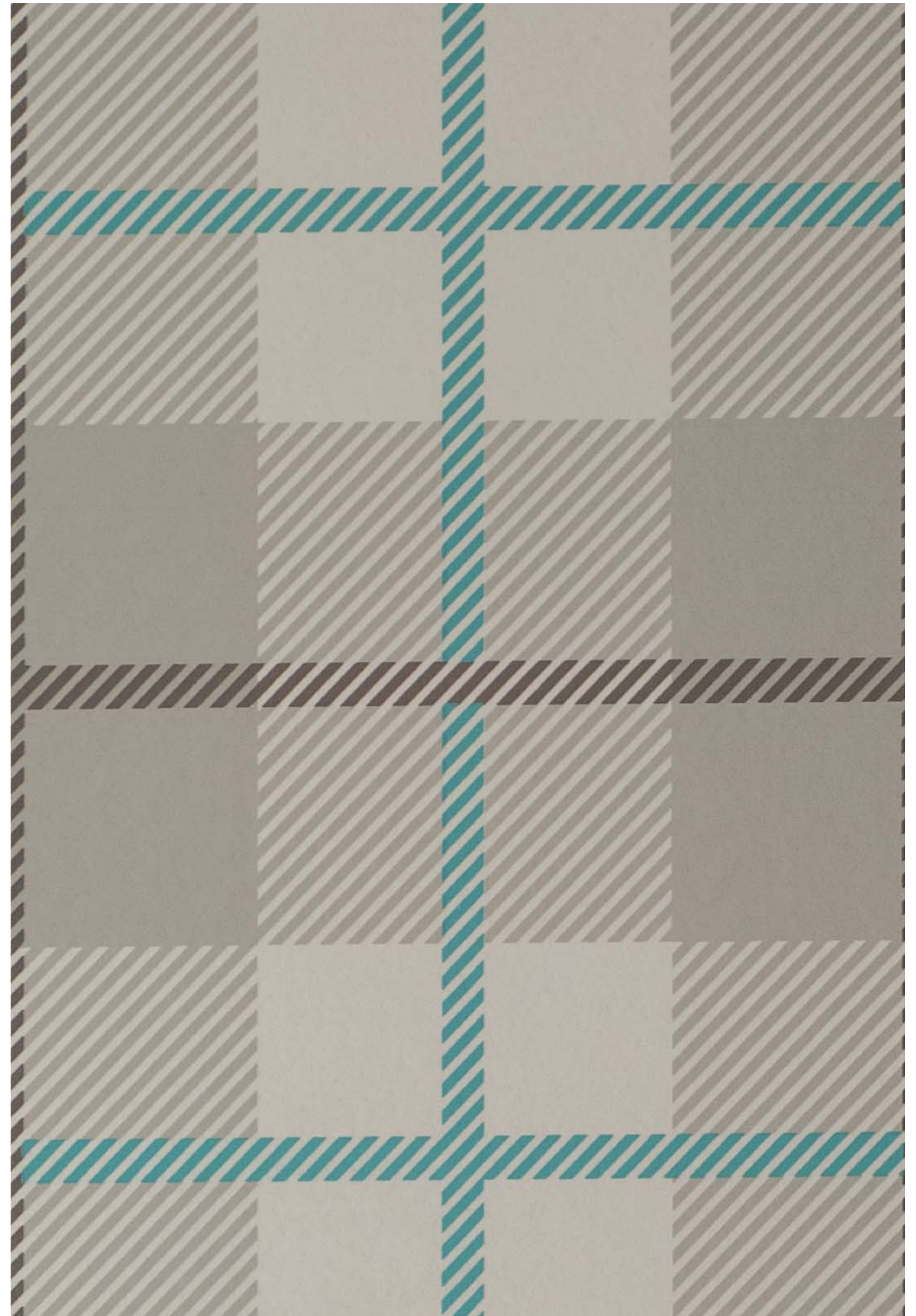


TARTAN PEARL TN6060P

Among the "must have" of this moment, declined in 7 colours matching the BASICS range colours in which the presence of a lively colour breaks the monotony of the background colour giving them contemporaneity and personality.

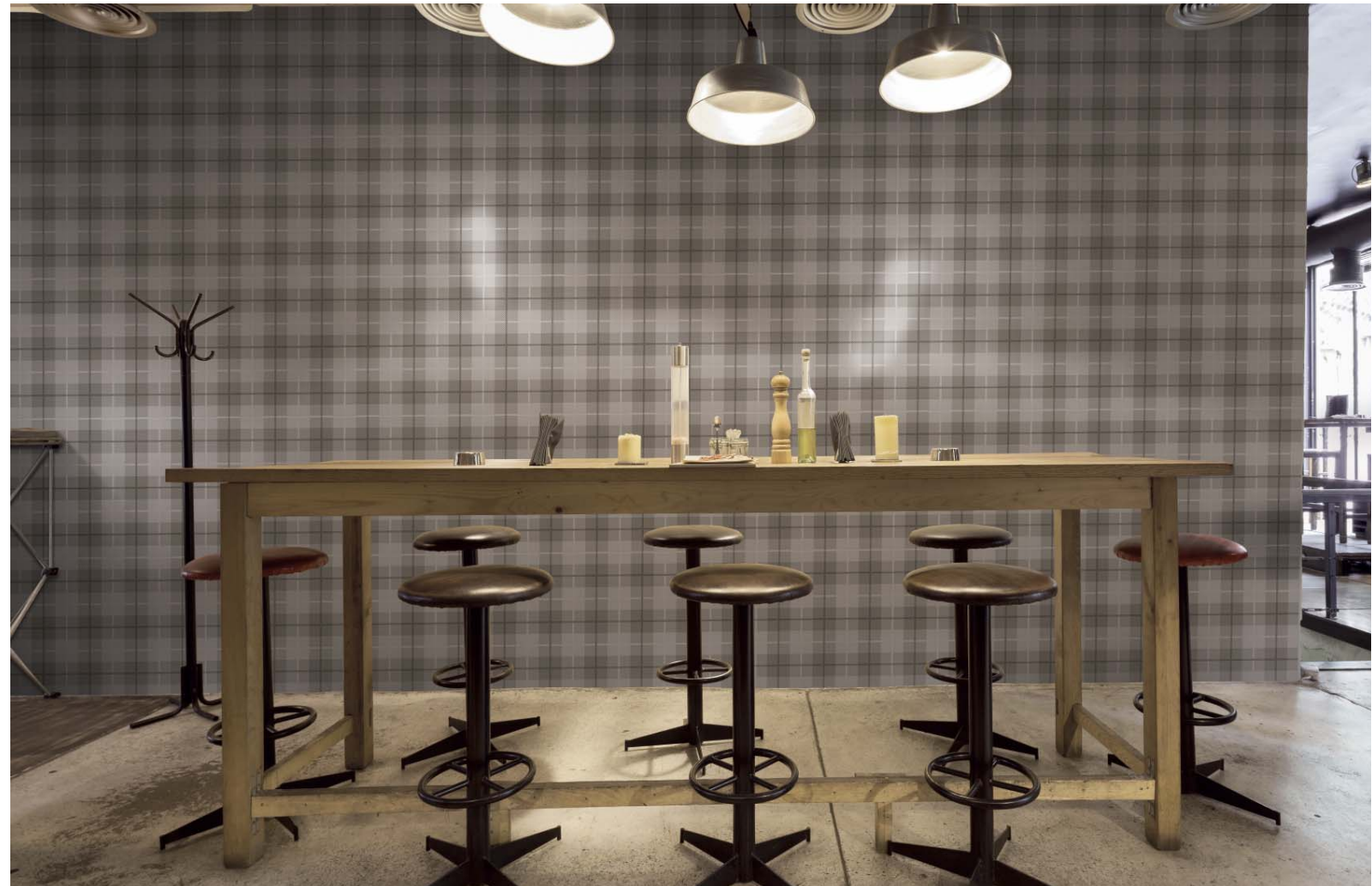
COLOUR PRINTED

CLOSE UP
TARTAN PEARL TA6060P





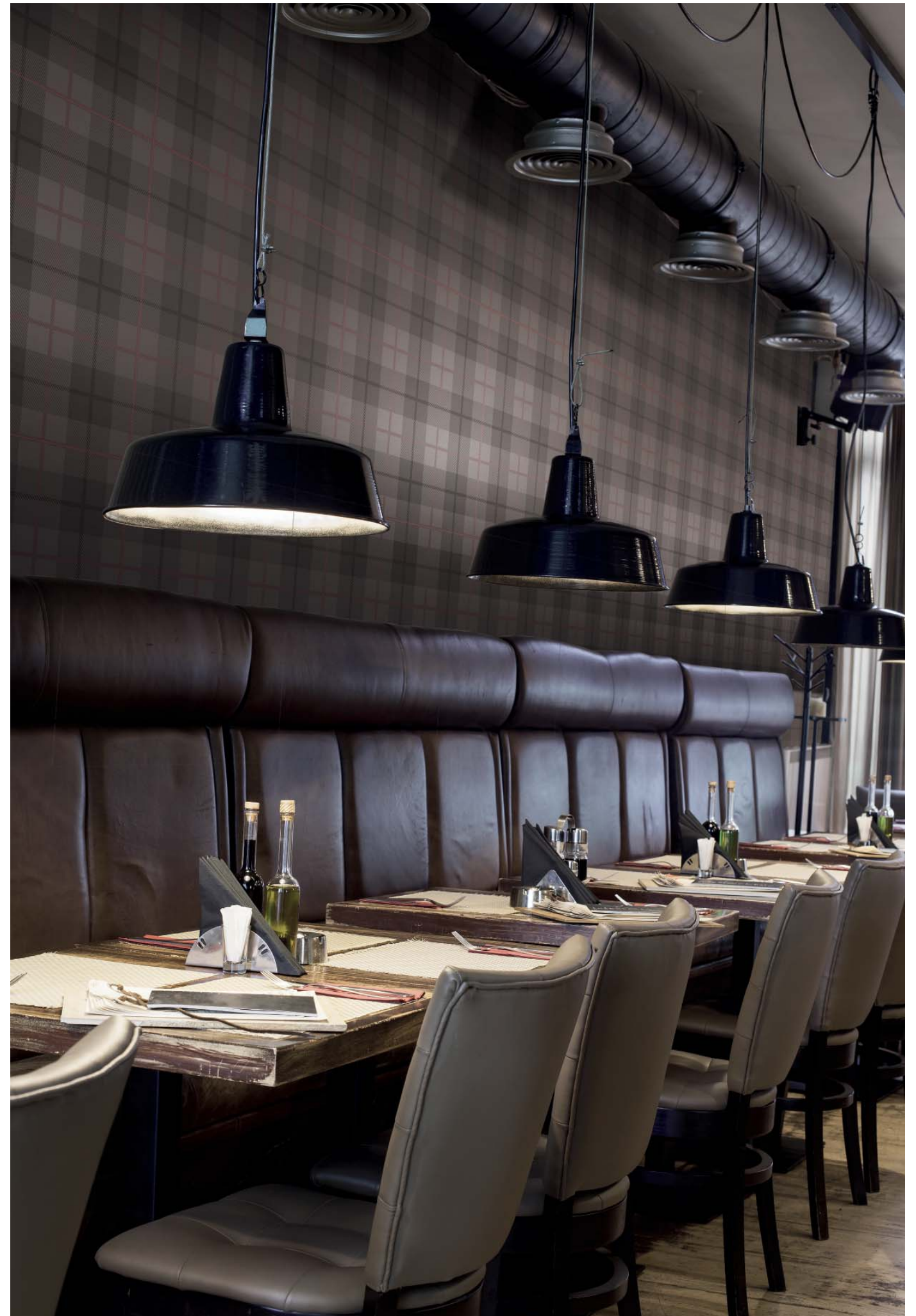
ADD A SCOTTISH TOUCH
TO YOUR WARDROBE

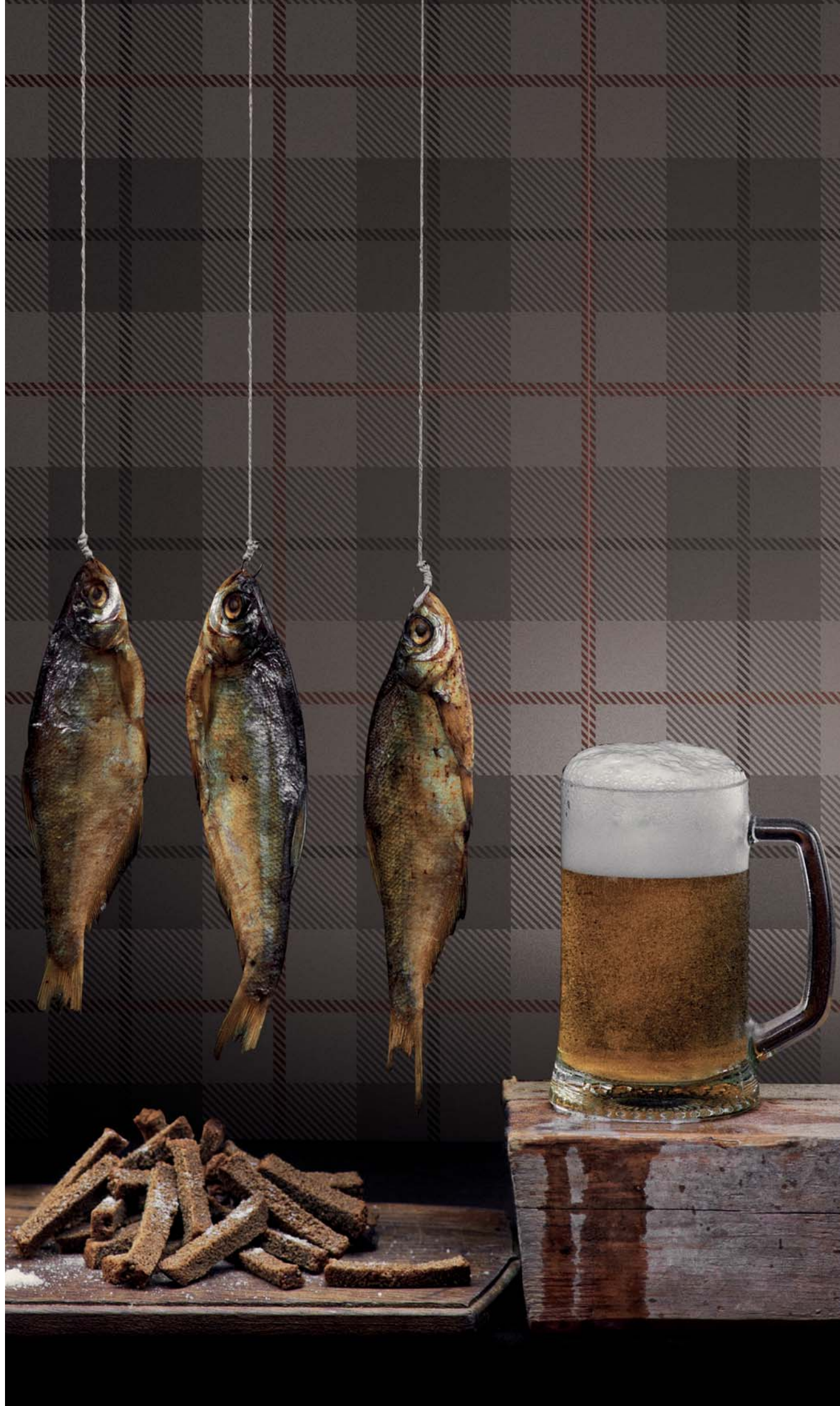


TARTAN TAUPE TN6060T

ASHGREY

FORMAL INFORMAL

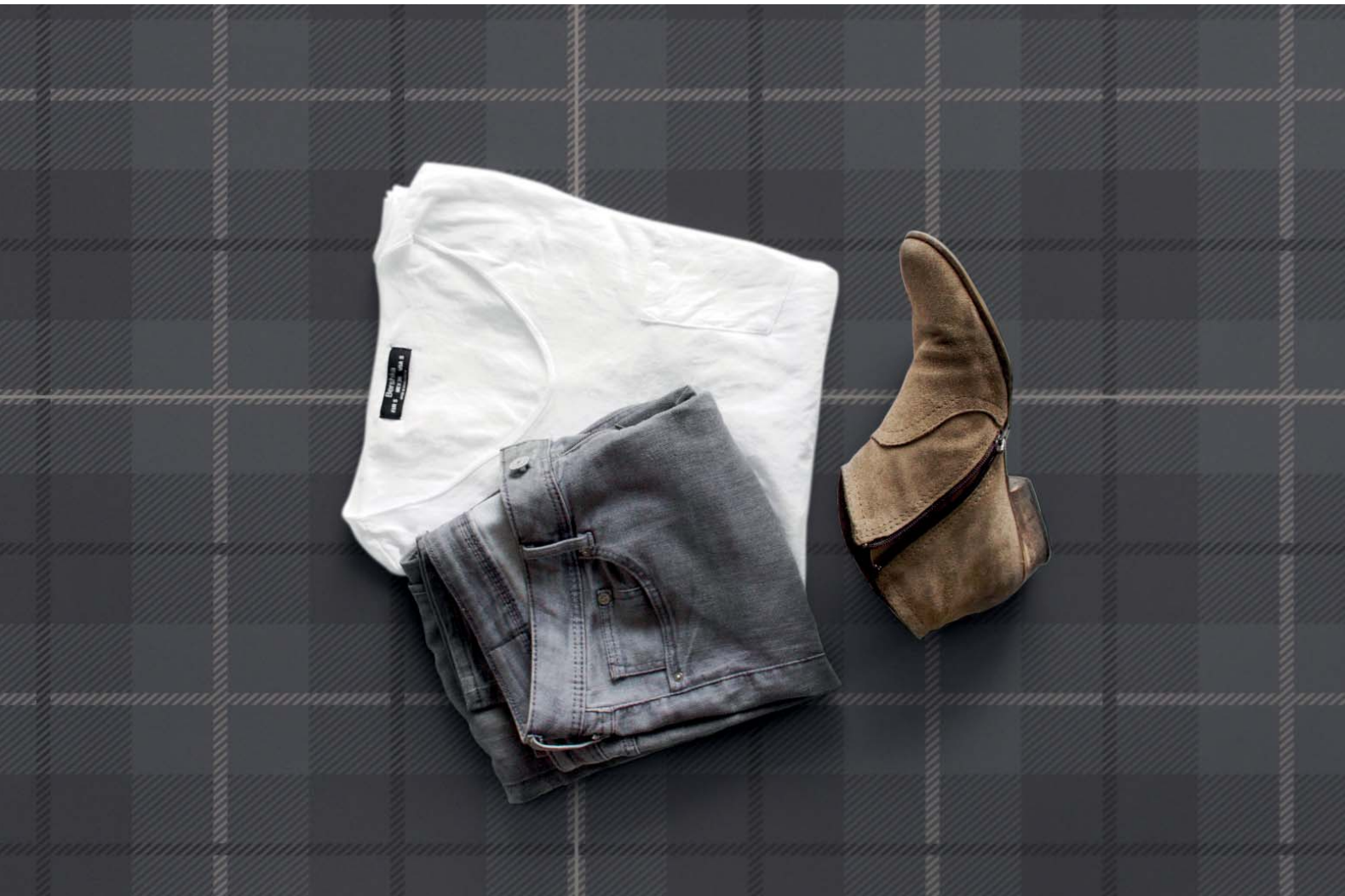




FISH MARKET

FIND OUT THE COLLECTION AT
ORNAMENTA.COM


GREY



CASUAL LOOK

Oggi voglio mostrarvi come
ho abbinato io questa fanta-
stica stampa: tartan mood.

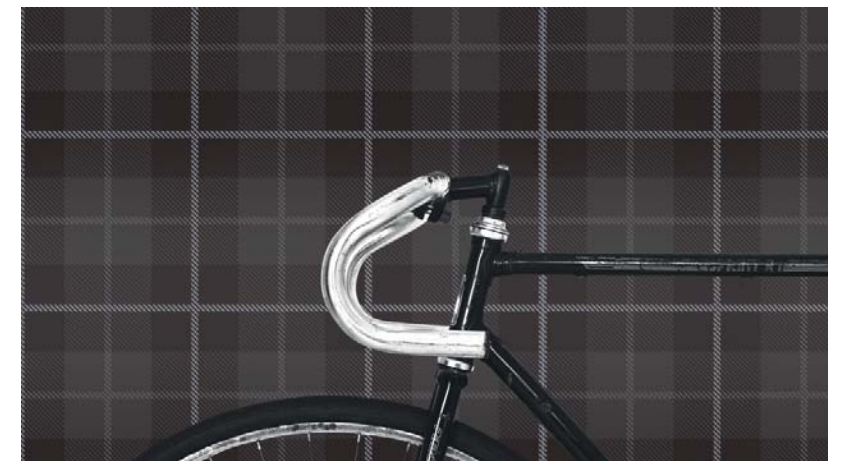
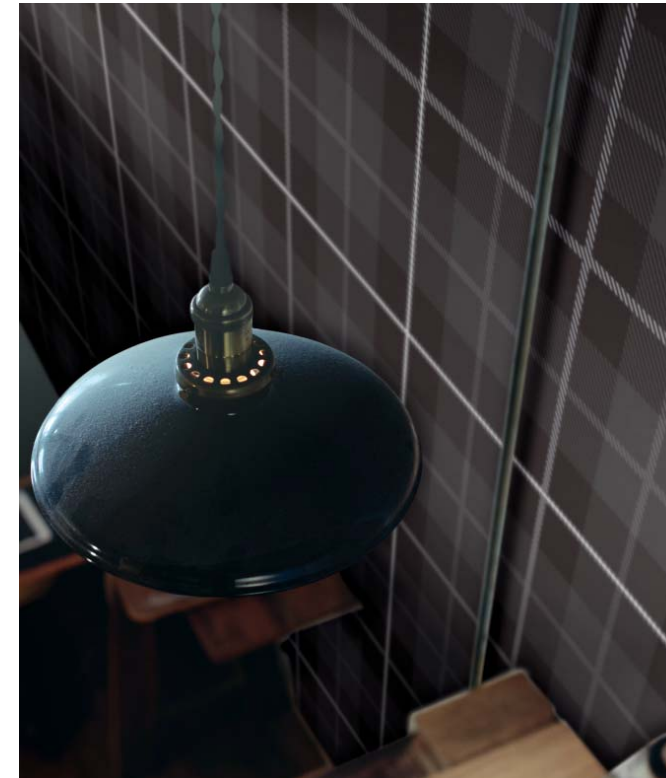
*Today I'd like to show
you how I combined this
fantastic tartan mood.*



Base di gres porcellanato in 60x60 cm con serigrafie di colore con caratteristiche tecniche superiori rendono il TARTAN adatto ad un utilizzo sia da pavimento che rivestimento.

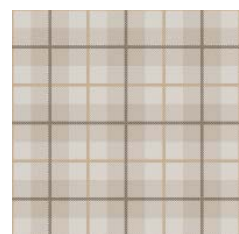
Gres porcelain tile in 60x60 cm 24"x24" with color screen printings of superior technical features make the TARTAN suitable for use both as floor and wall covering.

BLACK

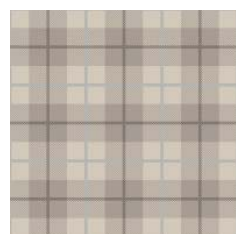


SHOP THE TREND

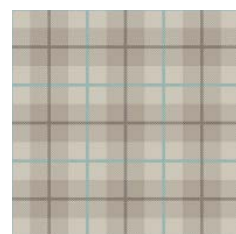
TECHNICAL INFO



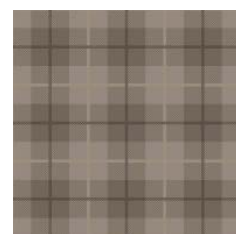
TN6060W
WHITE
60x60 | 24"x24"



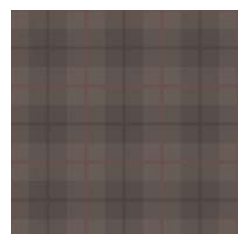
TN6060I
IVORY
60x60 | 24"x24"



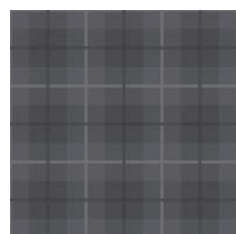
TN6060P
PEARL
60x60 | 24"x24"



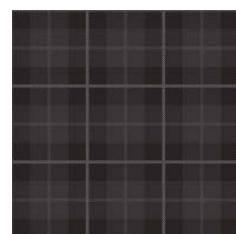
TN6060T
TAUPE
60x60 | 24"x24"



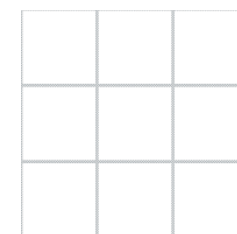
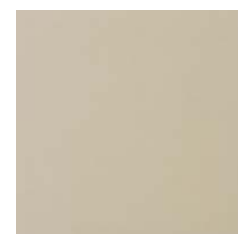
TN6060A
ASHGREY
60x60 | 24"x24"



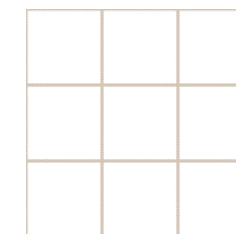
TN6060G
GREY
60x60 | 24"x24"



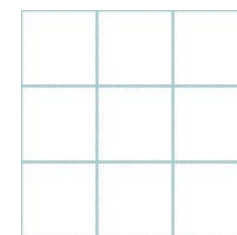
TN6060B
BLACK
60x60 | 24"x24"



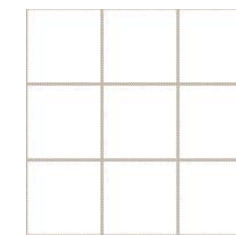
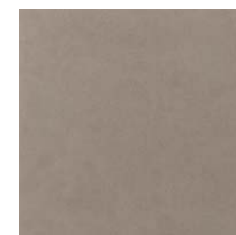
170 Celeste crocus - Crocus blue
TN6060I IVORY



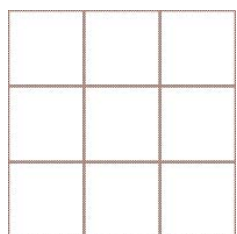
135 Polvere dorata - Golden dust
TN6060W WHITE



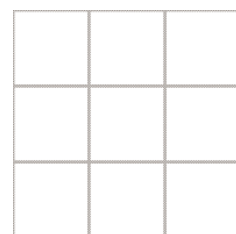
171 Turchese - Turquoise
TN6060P PEARL



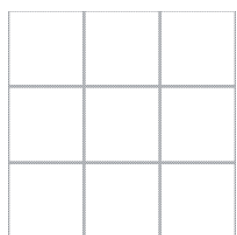
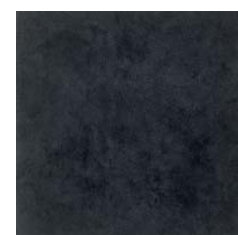
133 Sabbia - Sabbia
TN6060T TAUPE



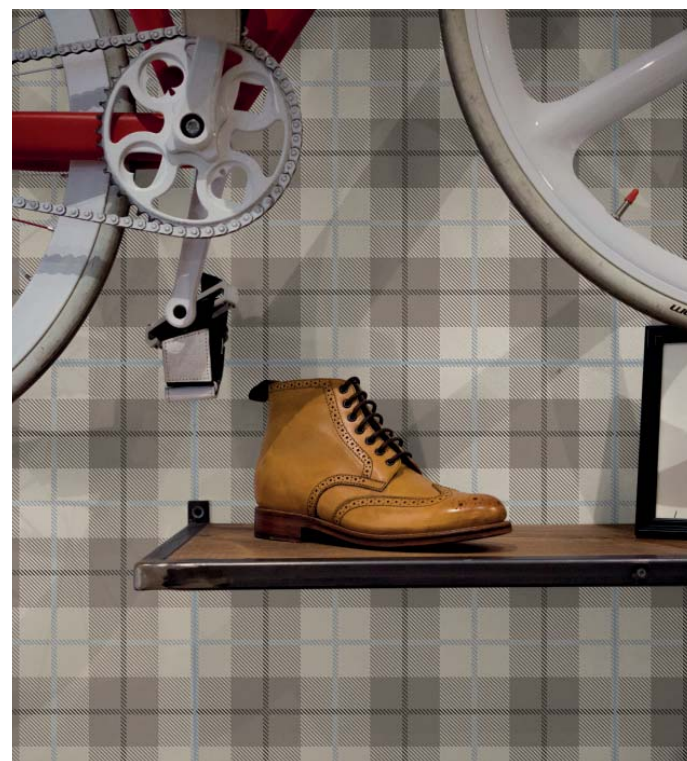
143 Terracotta - Terracotta
TN6060A ASHGREY



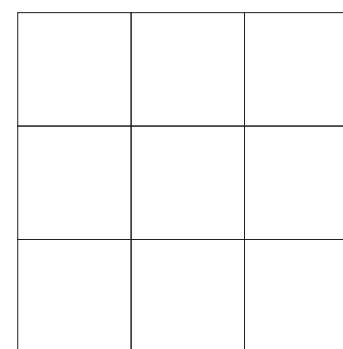
133 Sabbia - Sabbia
TN6060G GREY



110 Manhattan 2000
TN6060B BLACK



SCHEMI DI POSA / LAYOUT SETTINGS



Si consiglia di posare il prodotto utilizzando un distanziale da 2mm.
We suggest to lay the product by using a spacer of 2mm.

MISURE E PESI

weight and dimensions

poids et dimensions

größe und gewichte

medidas y pesos

Dimensione	
Size	60x60
Format	24”x24”
Format	
Tamaño	
Spessore	
Thickness	
Épaisseur	10 mm
Stärke	
Espesor	
Peso	
Weight	
Poids	7,4 kg
Gewicht	
Peso	
Pezzi per scatola	
Pieces per carton	
Pièces par carton	3
Stück pro Karton	
Unidades por caja	
Quantità per scatola	
Quantity per carton	
Quantité par carton	1,08 sqm
Quantität pro Karton	
Cantidad por caja	
Peso per scatola	
Weight per carton	
Poids par carton	22,20 kg
Gewicht pro Karton	
Peso por caja	
Scatole per paletta	
Boxes per pallet	
Cartons par palette	32
Karton pro palette	
Cajas por paleta	
Quantità per paletta	
Quantity per pallet	
Quantité par palette	34,56 sqm
Quantität pro palette	
Cantidad por paleta	
Peso per paletta	
Weight per pallet	
Poids par palette	731 kg
Gewicht pro palette	
Peso por paleta	

Giunto		Stucchi	170 Celeste crocus - Crocus blue		
Joint		Grouts	171 Turchese - Turquoise		
Joint	2 mm	Joints	133 Sabbia - Sabbia		ASTM C137.1
Fugenbreite		Fugenmassen	143 Terracotta - Terracotta		V0 - V4
Junta		Pasta de rejuntar	135 Polvere dorata - Golden dust		V01
			110 Manhattan 2000		
			Grado di variazione cromatica		
			Colour shade variation		
			Degré de variation chromatique		
			Grad Der Farbabweichung		
			Grado De Variación Cromatica		

Avvertenze

Non saranno accolte contestazioni per danni visibili prima della posa. I colori dei materiali illustrati nel presente catalogo sono da ritenersi puramente indicativi. I dati presenti nella tabella “Misure e Pesi” sono aggiornati al momento della stampa del catalogo, pertanto i dati elencati possono subire variazioni.

Advice

Claims on items which have already been laid will not be accepted for any damage visible before laying. Colours of the materials as illustrated in this catalogue are to be regarded as mere indications. The details present in the table “Weight and Dimensions” are updated at the time the catalogue is printed, therefore the datas may change.

Avertissements

Ils ne seront pas acceptées les réclamations pour dommages visibles avant l’installation. Les couleurs des matériaux illustrés dans ce catalogue sont purement indicatives. Les données dans le tableau «poids et mesures» est correcte au moment de l’impression du catalogue, pourquoi les données peuvent être modifiées.

Warnungen

Sie werden nicht vor der Installation akzeptiert Ansprüche auf sichtbare Beschädigungen werden. Die Farben der Materialien, die in diesem Katalog dargestellt sind rein indikativ. Die Daten in der Tabelle “Maße und Gewichte” ist korrekt zum Zeitpunkt der Druck des Katalogs, deshalb werden die aufgelisteten Daten geändert werden können.

Advertencias

No se aceptarán reclamaciones por daños visibles antes de la instalación. Los colores de los materiales descritos en este catálogo son meramente indicativos. Los datos de los “Pesos y Medidas” tabla es correcta en el momento de imprimir el catálogo, por lo tanto, los datos enumerados pueden ser alterados.

CARATTERISTICHE TECNICHE

technical features

caractéristiques techniques

technische eigenschaften

características técnicas

	NORMA STANDARD	VALORI LIMITI PREVISTI ESTABLISHED LIMITS VALEURS LIMITES PRÉVUES VORGESEHENE GRENZWERTE VALORES LIMITE PREVISTOS	VALORI RILEVATI MEASURED VALUES VALEURS MESUREES MESSWERTE VALOR MEDIDO
Lunghezza e larghezza Lenght and width Longueur et largeur Länge und Breite Longitud y anchura	ISO 10545.2	± 0,6%	± 0,6%
Rettilineità degli spigoli Straightness of sides Rectitude des arêtes Geradlinigkeit der Kanten Rectitud de los cantos	ISO 10545.2	± 0,5%	± 0,5%
Planarità Flatness Planéité Ebenflächigkeit Planeidad	ISO 10545.2	± 0,5%	± 0,5%
Assorbimento d’acqua Water absorption Absorption d’eau Wasseraufnahme Absorción de agua	ISO 10545.3 ASTM C373	< 0,5%	< 0,5%
Resistenza agli sbalzi termici Thermal shock Choc thermique Thermoschock Choque termal	ISO 10545.9 ASTM C484	Resistente Resistant Résistant Beständig Resistente	Resistente Resistant Résistant Beständig Resistente
Resistenza agli attacchi chimici Chemical resistance Résistance chimique Chemische Resistenz Resistencia química	ISO 10545.13 ASTM C650	Conforme Complies with the standards Conforme aux normes Anforderungenerf erfüllt Conforme con las normas	Conforme Complies with the standards Conforme aux normes Anforderungenerf erfüllt Conforme con las normas
Resistenza all’abrasione Deep resistance Résistance à l’abrasion Abriebfestigkeit Resistencia a la abrasión	ISO 10545.7 ASTM 1027	100 PEI 0 150 PEI I 600 PEI II 750 - 1500 PEI III 2100 - 6000 - 12000 PEI IV > 12000 PEI V	PEI IV
Resistenza alle macchie Stains Resistance Résistance aux taches Fleckenbeständigkeit Resistencia a las manchas	ISO 10545.14 ASTM CC1378	≥ Classe 3 ≥ Class 3 ≥ Classe 3 ≥ Klasse 3 ≥ Categoria 3	Classe 5 Class 5 Classe 5 Klasse 5 Categoria 5
Resistenza allo scivolamento Antislip value Résistance au glissement Rutschhemmung Resistencia al deslizamiento	DIN 51130	da R9 a R13 from R9 to R13 de R9 à R13 von R9 bis R13 de R9 a R13	R10
	D-COF	> 0,42	≥ 0,42
Resistenza al gelo Frost resistant Résistant au gel Frostbeständig beständig Resistente a las heladas	ISO 10545.12 ASTM C1026	Conforme Complies with the standards Conforme aux normes Anforderungenerf erfüllt Conforme con las normas	Conforme Complies with the standards Conforme aux normes Anforderungenerf erfüllt Conforme con las normas
Resistenza alla rottura Breaking strenght Résistance à la rupture Biegezugfestigkeit Resistencia a flexión	ISO 10545.4	≥ 28 N/mm ²	Conforme Complies with the standards Conforme aux normes Anforderungenerf erfüllt Conforme con las normas

TARTAN

CREDITS

EDITION

October 2017
© All rights reserved

ART DIRECTION

Davide Tonelli
info@davidetonelli.it
linkedin.com/in/davidetonelli/

COMPANY

ORNAMENTA® Headquarter
Via Mosca, 1 - 41049
Sassuolo - (MO) Italia
T. +39 0536 867411
info@ornamenta.com

ORNAMENTA® Production unit
via Stradone Secchia 29,
42014 Roteglia - (RE) Italia
T. +39 0536 867411

COMMUNICATION & PR.

ORNAMENTA Press Office
press@ornamenta.com

ORNAMENTA.COM

ORNAMENTA®

A.D. Davide Tonelli

ORNAMENTA®
Via Mosca, 1 - 41049
Sassuolo - (MO) Italia
T. +39 0536 867411
F. +39 0536 803937
info@ornamenta.com
IT 00831670369
Gamma Due S.p.A.

ornamenta.com

@ornamentaceramics