

JUNGLE

ORNAMENTA.COM

FABRIC
PATTERN
60X60 //
GRES PORCELAIN //
RECTIFIED //

ORNAMENTA®

FABRIC WALLPAPER

don't be scared be wild!

SUMMARY

COLOURS

pag. 4 | 5

THE COLLECTION

pag. 6 | 13

URBAN LOVE

pag. 14 | 19

TECHNICAL INFO

pag. 21 | 25

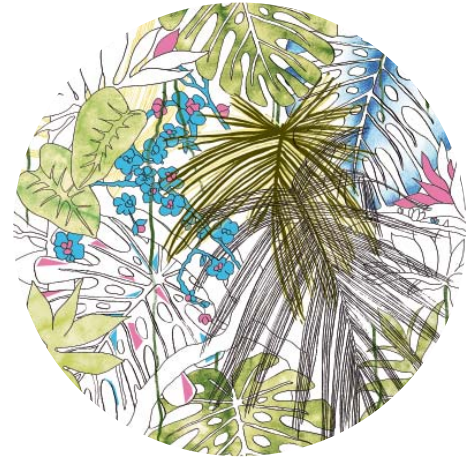
CREDITS

pag. 26

ORNAMENTA.COM



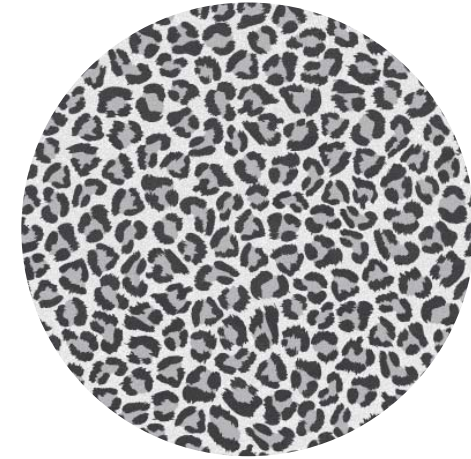
flora
equatoriale



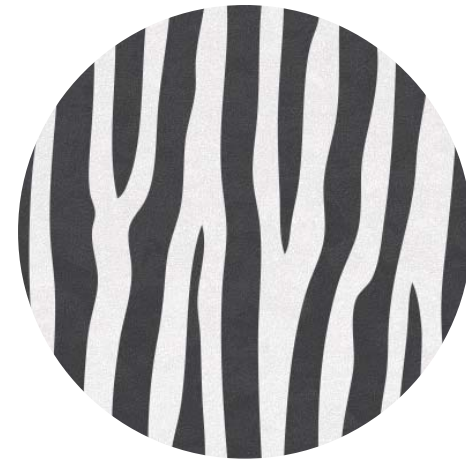
flora equatoriale
aggressive



spina



leopard



zebra



hybrid

*I colori e le caratteristiche estetiche dei materiali illustrati nel presente catalogo sono da ritenersi puramente indicativi.
Colours and aesthetical features of the materials as illustrated in this catalogue are to be regarded as mere indications.

IT'S LIKE A

JU

NG

LE

SOMETIMES

#bewild

JUNGLE



Wallpaper 60x60 - 24"x24 mix 3



PURE MORNING

#benatural

lifetime

Fuga dai pensieri compressi
Escape from compressed thoughts

La base bianca di Gres Porcellanato è il backstage su cui prende vita la giungla in cui addentrarsi. Due versioni di colore: neutra e aggressive, stesso spirito selvaggio per entrambe. Disegnati completamente a mano in "tecnica mista" - acquerello, matita e china - i tre soggetti mix nella scatola consentono di avere una parete variegata, non ripetitiva e assolutamente timeless e infinitamente chic. La stampa digitale HD unita al tratto serigrafico rigido del nero ci proiettano realisticamente all'interno della rigogliosa flora equatoriale.

The White of "Basics" gres porcelain program is the backstage where the jungle comes to life. Two colours: neutral and aggressive, same wild spirit for both. Completely handmade drawn, with a "mixed technique" - watercolor, pencil and ink - the three subjects mixed in the box allow you to have a "non-repetitive" wall, absolutely timeless and endlessy chic. Digital HD printing is combined with the plain screen drive us realistically into the lush equatorial flora.

just

living

DETAILS
*make the
difference*



the

bathroom

leaves

A volte la vita non ci lascia scelta.
Forse è il suo modo di mostrarci la via.

*Sometimes life leaves us no choice.
Perhaps it is its way to show us the way.*





URBAN LOVE

INTIMACY
AND SEDUCTION
IN URBAN
LANDSCAPE

STREET STYLE

Nel sistema moda contemporaneo, l'animalier è sempre più usato da diversi stilisti in tutte le sue declinazioni. La declinazione che abbiamo scelto noi parte da due tra le texture più usate: il leopardo e lo zebra, interpretate in

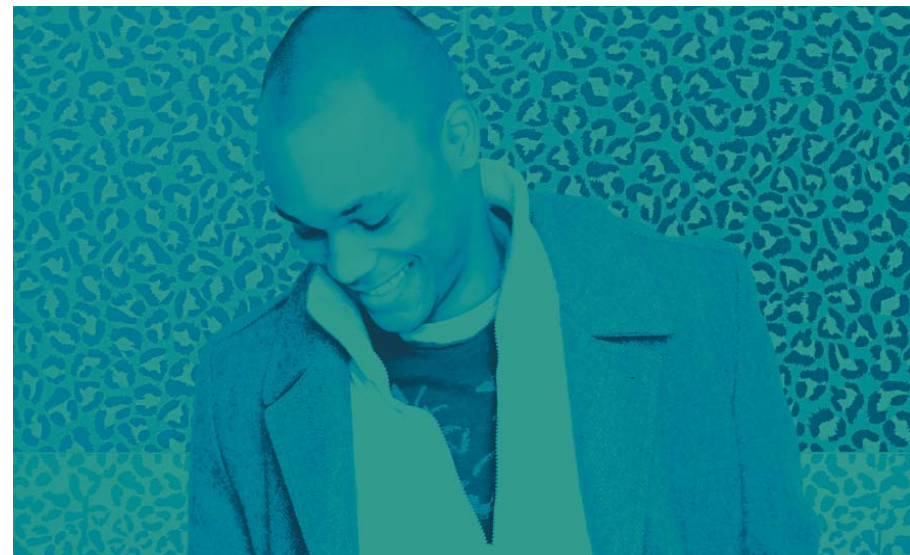


perfetto "street style". Un "print animalier", texture passepartout per persone grintose che amano mescolare colori audaci e neutri per creare mix equilibrati, espressione di contemporary homestyle.

Chic, glamour, bon ton, pop, soft, provocatorio, lussuoso; l'animalier affascina da sempre molti designers grazie alle sue molteplici identità. Considerato uno dei capisaldi del fashion system e oggi



definito da molti "the new black", per il suo utilizzo smodato, l'animalier è presente sulle passerelle dal 1947. Ripresentato in molte varianti, questo trend non conosce stagioni.

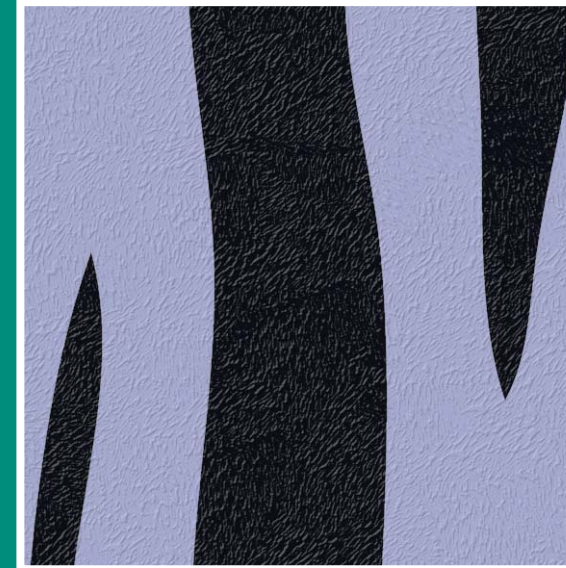
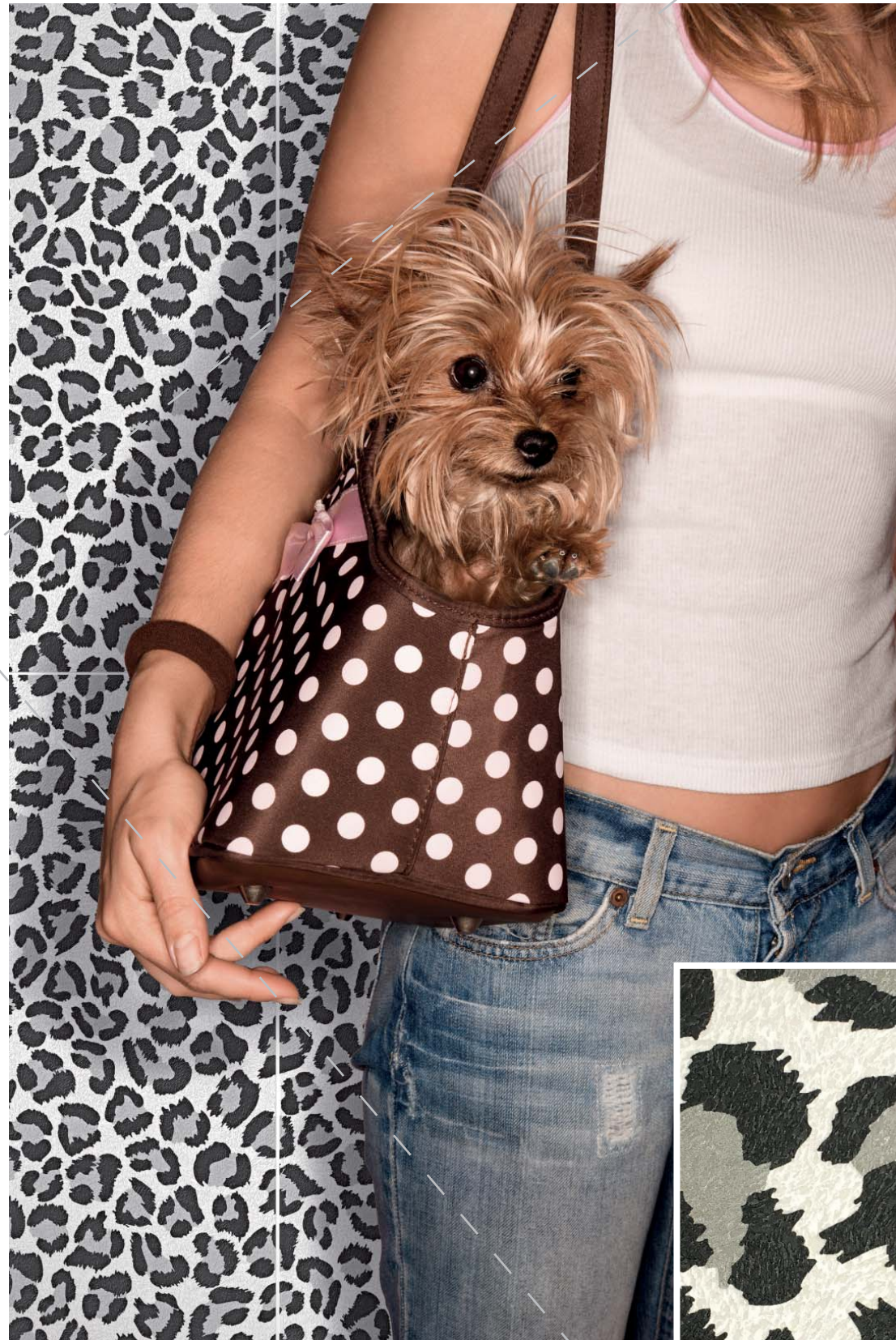


In the Fashion-system Animalier is used more and more by different stylists in all its expressions. The declination we have chosen starts with two textures: leopard and zebra, designed in perfect "street style". A "print animalier", passepartout texture for gritty people who love to mix bold colors and neutral ones to create balanced mix, expression of contemporary homestyle..

THE NEW BLACK

Chic, glamour, bon ton, pop, soft, provocative, lussy; the animalier has always fascinated many designers with its diverse identities. Considered one of the cornerstones of the fashion system and today called by many "the new black", for his immoderate use, the animal is present on the runway since 1947. Resubmitted in many variations, this trend does not know the seasons.

FABRIC TEXTURE



COLOUR

LOVE

Gli ambienti del daytime si trasformano in una giungla
The spaces of the daytime are transformed into a jungle

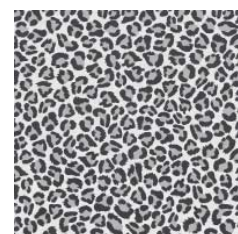
TECHNICAL INFO



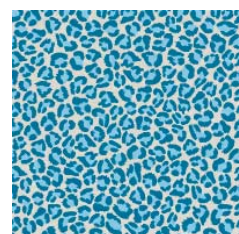
JU6060FL
FLORA EQUATORIALE
60x60 | 24"x24"



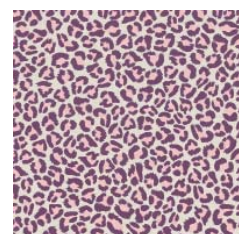
JU6060FLA
FLORA EQUATORIALE
AGGRESSIVE 60x60 | 24"x24"



AN6060LEOK
LEOPARD KEY
60x60 | 24"x24"



AN6060LEOB
LEOPARD BLUE
60x60 | 24"x24"



AN6060LEOF
LEOPARD FUCSIA
60x60 | 24"x24"



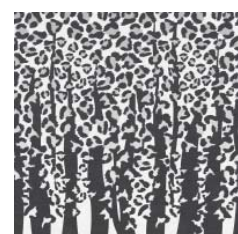
AN6060ZEBK
ZEBRA KEY
60x60 | 24"x24"



AN6060ZEBG
ZEBRA GREEN
60x60 | 24"x24"



AN6060ZEBV
ZEBRA VIOLET
60x60 | 24"x24"



AN6060HYBK
HYBRID KEY
60x60 | 24"x24"



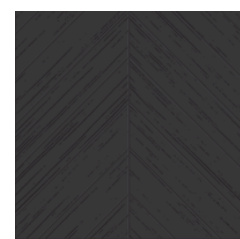
AN6060HYBGB
HYBRID GREEN-BLUE
60x60 | 24"x24"



AN6060HYBFV
HYBRID FUCSIA-VIOLET
60x60 | 24"x24"



JU6060SPB
SPINA BIANCO
60x60 | 24"x24"



JU6060SPN
SPINA NERO
60x60 | 24"x24"

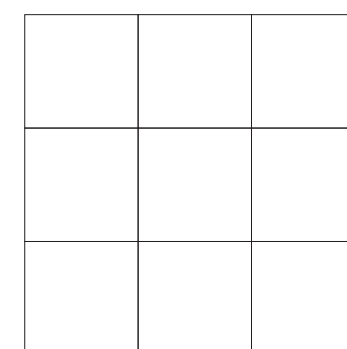
WALL

FLOOR

Formato/Size	Numero grafiche/Number of patterns
Flora equatoriale	3
Flora equatoriale aggressiva	3



SCHEMI DI POSA / LAYOUT SETTINGS



Si consiglia di posare il prodotto utilizzando un distanziale da 2mm.
We suggest to lay the product by using a spacer of 2mm.

MISURE E PESI

weight and dimensions

poids et dimensions

größe und gewichte

medidas y pesos

Dimensione	
Size	60x60
Format	24”x24”
Format	
Tamaño	
Spessore	
Thickness	
Épaisseur	10 mm
Stärke	
Espesor	
Peso	
Weight	
Poids	7,4 kg
Gewicht	
Peso	
Pezzi per scatola	
Pieces per carton	
Pièces par carton	3
Stück pro Karton	
Unidades por caja	
Quantità per scatola	
Quantity per carton	
Quantité par carton	1,08 sqm
Quantität pro Karton	
Cantidad por caja	
Peso per scatola	
Weight per carton	
Poids par carton	22,20 kg
Gewicht pro Karton	
Peso por caja	
Scatole per paletta	
Boxes per pallet	
Cartons par palette	32
Karton pro palette	
Cajas por paleta	
Quantità per paletta	
Quantity per pallet	
Quantité par palette	34,56 sqm
Quantität pro palette	
Cantidad por paleta	
Peso per paletta	
Weight per pallet	
Poids par palette	731 kg
Gewicht pro palette	
Peso por paleta	

Giunto		Stucchi		Grado di variazione cromatica	
Joint		Grouts		Colour shade variation	ASTM C137.1
Joint	2 mm	Joints	100 Bianco-White	Degré de variation chromatique	V0 - V4
Fugenbreite		Fugenmassen	120 Nero-Black	Grad Der Farbabweichung	V01
Junta		Pasta de rejuntar		Grado De Variación Cromatica	

Avvertenze

Non saranno accolte contestazioni per danni visibili prima della posa. I colori dei materiali illustrati nel presente catalogo sono da ritenersi puramente indicativi. I dati presenti nella tabella "Misure e Pesi" sono aggiornati al momento della stampa del catalogo, pertanto i dati elencati possono subire variazioni.

Advice

Claims on items which have already been laid will not be accepted for any damage visible before laying. Colours of the materials as illustrated in this catalogue are to be regarded as mere indications. The details present in the table "Weight and Dimensions" are updated at the time the catalogue is printed, therefore the datas may change.

Avertissements

Ils ne seront pas acceptées les réclamations pour dommages visibles avant l'installation. Les couleurs des matériaux illustrés dans ce catalogue sont purement indicatives. Les données dans le tableau «poids et mesures» est correcte au moment de l'impression du catalogue, pourquoi les données peuvent être modifiées.

Warnungen

Sie werden nicht vor der Installation akzeptiert Ansprüche auf sichtbare Beschädigungen werden. Die Farben der Materialien, die in diesem Katalog dargestellt sind rein indikativ. Die Daten in der Tabelle "Maße und Gewichte" ist korrekt zum Zeitpunkt der Druck des Katalogs, deshalb werden die aufgelisteten Daten geändert werden können.

Advertencias

No se aceptarán reclamaciones por daños visibles antes de la instalación. Los colores de los materiales descritos en este catálogo son meramente indicativos. Los datos de los "Pesos y Medidas" tabla es correcta en el momento de imprimir el catálogo, por lo tanto, los datos enumerados pueden ser alterados.

CARATTERISTICHE TECNICHE

technical features

caractéristiques techniques

technische eigenschaften

características técnicas

	NORMA STANDARD	VALORI LIMITI PREVISTI ESTABLISHED LIMITS VALEURS LIMITES PRÉVUES VORGESEHENE GRENZWERTE VALORES LIMITE PREVISTOS	VALORI RILEVATI MEASURED VALUES VALEURS MESUREES MESSWERTE VALOR MEDIDO
Lunghezza e larghezza Lenght and width Longueur et largeur Länge und Breite Longitud y anchura	ISO 10545.2	± 0,6%	± 0,6%
Rettilineità degli spigoli Straightness of sides Rectitude des arêtes Geradlinigkeit der Kanten Rectitud de los cantos	ISO 10545.2	± 0,5%	± 0,5%
Planarità Flatness Planéité Ebenflächigkeit Planeidad	ISO 10545.2	± 0,5%	± 0,5%
Assorbimento d'acqua Water absorption Absorption d'eau Wasseraufnahme Absorción de agua	ISO 10545.3 ASTM C373	≤ 0,5%	≤ 0,5%
Resistenza agli sbalzi termici Thermal shock Choc thermique Thermoschock Choque termal	ISO 10545.9 ASTM C484	Resistente Resistant Résistant Beständig Resistente	Resistente Resistant Résistant Beständig Resistente
Resistenza agli attacchi chimici Chemical resistance Résistance chimique Chemische Resistenz Resistencia química	ISO 10545.13 ASTM C650	Conforme Complies with the standards Conforme aux normes Anforderungenerf erfüllt Conforme con las normas	Conforme Complies with the standards Conforme aux normes Anforderungenerf erfüllt Conforme con las normas
Resistenza alle macchie Stains Resistance Résistance aux taches Fleckenbeständigkeit Resistencia a las manchas	ISO 10545.14 ASTM CC1378	≥ Classe 3 ≥ Class 3 ≥ Klasse 3 ≥ Categoria 3	Classe 5 Class 5 Classe 5 Klasse 5 Categoria 5
Resistenza al gelo Frost resistant Résistant au gel Frostbeständig Resistente a las heladas	ISO 10545.12 ASTM C1026	Conforme Complies with the standards Conforme aux normes Anforderungenerf erfüllt Conforme con las normas	Conforme Complies with the standards Conforme aux normes Anforderungenerf erfüllt Conforme con las normas
Resistenza alla rottura Breaking strenght Résistance à la rupture Biegezugfestigkeit Resistencia a flexión	ISO 10545.4	≥ 28 N/mm ²	Conforme Complies with the standards Conforme aux normes Anforderungenerf erfüllt Conforme con las normas

CREDITS

EDITION

October 2017
© All rights reserved

ART DIRECTION

Davide Tonelli
info@davidetonelli.it
linkedin.com/in/davidetonelli/

COMPANY

ORNAMENTA® Headquarter
Via Mosca, 1 - 41049
Sassuolo - (MO) Italia
T. +39 0536 867411
info@ornamenta.com

ORNAMENTA® Production unit
via Stradone Secchia 29,
42014 Roteglia - (RE) Italia
T. +39 0536 867411

COMMUNICATION & PR.

ORNAMENTA Press Office
press@ornamenta.com

ORNAMENTA.COM

ORNAMENTA®

A.D. Davide Tonelli

ORNAMENTA®
Via Mosca, 1 - 41049
Sassuolo - (MO) Italia
T. +39 0536 867411
F. +39 0536 803937
info@ornamenta.com
IT 00831670369
Gamma Due S.p.A.

ornamenta.com

@ornamentaceramics