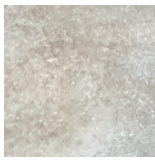


DUERO

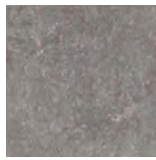
30x30cm./ 30x60cm./ 15x60cm./ 15x30cm./ 15x15cm.

Porcelánicos Porcelain Tiles

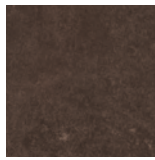




Urbión



Aranda



Roa



PORCELÁNICO
PORCELAIN



ESMALTADO
GLAZED



Características dimensionales
Dimension tolerance

<1% ·
máx 2 mm.



Absorción de agua
Water absorption

E≤0,5%



Coef. Dilatación termica lineal
Linear thermal expansion coefficient

5,8x10⁻⁶·°C⁻¹



Resistencia a la flexión
Breaking Strength

>40N/mm²



Resistencia a la abrasión superficial
Resistance to surface abrasion

Urbión PEI 5
Aranda PEI 4
Roa PEI 2



Desgaste transito peatonal
Erosion to pedestrian transit

H6



Resistencia al rayado (método Mohs)
Scratch hardness of surface (Mohs Method)

6 - 8



Resistencia a las manchas
Resistance to stains

clase 5
class 5



Péndulo (CTE)
Not required out of Spain

Urbión/Aranda:
clase 3
Roa: clase 1



A pie descalzo
Barefoot slip resistance

Urbión/Aranda C
Roa B
Antislip C



A pie calzado
Slip resistance with footwear

Urbión/Aranda
R10
Roa R9
Antislip R13



Resistencia al cuarteo
Crazing resistance

sí/yes



Extrusión
Extruded tiles

✓



Resistencia a la helada
Frost resistance

✓



Resistencia al choque térmico
Resistance to thermal shock

✓



Resistencia química
Chemical resistance

✓

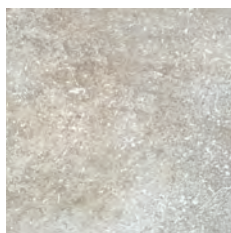
DUERO

30x30cm./30x60cm./15x60cm./15x30cm./15x15cm.

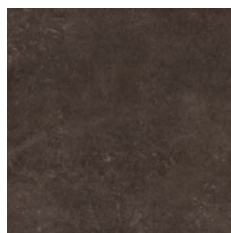
Colores / Colors



Aranda



Urbión



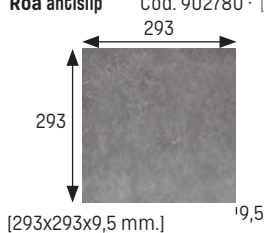
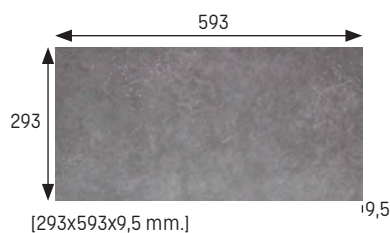
Roa

Base 30x60 Tile 30x60

Aranda	Cod. 903350 · [MC520]
Urbión	Cod. 903351 · [MC520]
Roa	Cod. 902460 · [MC520]

Base 30x30 Tile 30x30

Aranda	Cod. 903366 · [MC485]
Urbión	Cod. 903378 · [MC485]
Roa	Cod. 902462 · [MC485]
Aranda antislip	Cod. 902783 · [MC485]
Urbión antislip	Cod. 902786 · [MC485]
Roa antislip	Cod. 902780 · [MC485]



Base 15x60 Tile 15x60

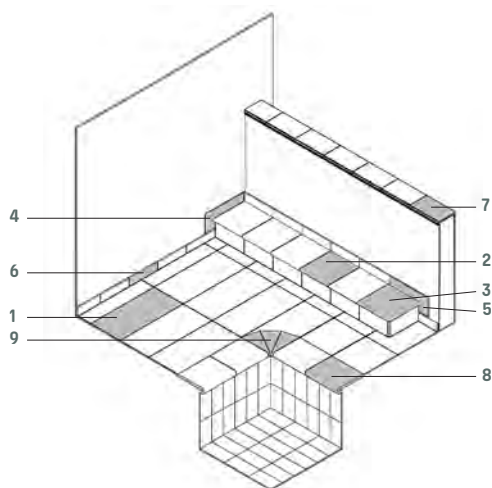
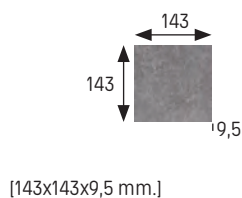
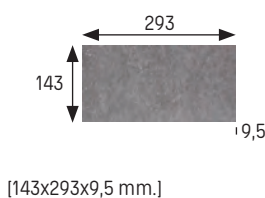
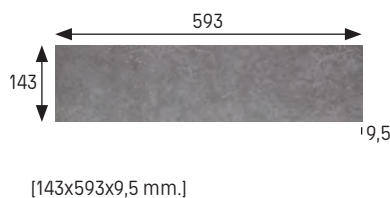
Aranda	Cod. 903364 · [MC625]
Urbión	Cod. 903376 · [MC625]
Roa	Cod. 902461 · [MC625]

Base 15x30 Tile 15x30

Aranda	Cod. 903365 · [MC665]
Urbión	Cod. 903377 · [MC665]
Roa	Cod. 902463 · [MC665]

Base 15x15 Tile 15x15

Aranda	Cod. 903367 · [MC705]
Urbión	Cod. 903379 · [MC705]
Roa	Cod. 902464 · [MC705]



- | | |
|----------------------------|---------------------|
| 1 Base | Tile |
| 2 Peldaño | Stair-tread |
| 3 Esquina de peldaño | Stair-tread corner |
| 4 Zanquin izda. | String left |
| 5 Zanquin dcha. | String right |
| 6 Rodapié | Skirting board |
| 7 Pasamanos | Handrail |
| 8 Remate | Edge |
| 9 Esq. interior remate R50 | Internal corner R50 |

	Espesor (mm) Thickness (mm)	U.M.*	U.M./caja U.M./box	U.M./Palet U.M./Pallet	Pzs./U.M. Pcs./U.M.	Pzs./caja Pcs/box	Kg./U.M. Kg./U.M.	Kg./caja Kg./box	Kg./Palet Kg./Pallet
Base 30x30 Tile 30x30	9,5	m ² sqm	0,99	71,29	11,11	11	19,8	19,6	1412
Base 30x60 Tile 30x60	9,5	m ² sqm	1,08	64,86	5,55	6	19,6	21,2	1270
Base 15x15 (*) Tile 15x15 (*)	9,5	m ² sqm	0,99	71,29	44,44	44	19,1	18,90	1361,44
Base 15x30 (*) Tile 15x30 (*)	9,5	m ² sqm	0,99	71,29	22,22	22	19,9	19,70	1418,67
Base 15x60 (*) Tile 15x60 (*)	9,5	m ² sqm	1,08	34,56	11,11	12	19,9	21,49	687,74

*Unidad de Medida. Los artículos medidos en M² o ML se sirven contando la junta normal entre piezas
*Unit of measure. Items measured in SQM or LM are delivered assuming average joint between pieces

(*) Disponible bajo pedido
(*) Available on request



DUERO Piezas especiales Special pieces

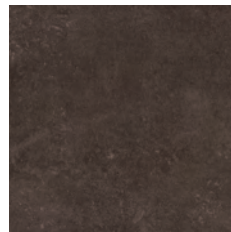
Colores / Colors



Aranda



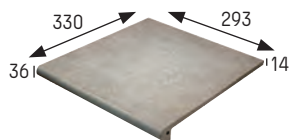
Urbión



Roa

Peldaño 30 Stair-tread 30

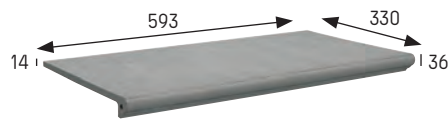
Aranda	Cod. 903353 · [PZ300]
Urbión	Cod. 903354 · [PZ300]
Roa	Cod. 902465 · [PZ300]
Aranda antislip	Cod. 902784 · [PZ300]
Urbión antislip	Cod. 902787 · [PZ300]
Roa antislip	Cod. 902781 · [PZ300]



[293x330x14 mm.]

Peldaño 60 Stair-tread 60

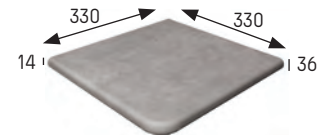
Aranda	Cod. 902703 · [PZ590]
Urbión	Cod. 902702 · [PZ590]
Roa	Cod. 902701 · [PZ590]



[593x330x14 mm.]

Esquina Stair-tread corner

Aranda	Cod. 903369 · [PZ695]
Urbión	Cod. 903381 · [PZ695]
Roa	Cod. 902469 · [PZ695]
Aranda antislip	Cod. 902785 · [PZ695]
Urbión antislip	Cod. 902788 · [PZ695]
Roa antislip	Cod. 902782 · [PZ695]



[330x330x14 mm.]

Zanquín izda. String left side

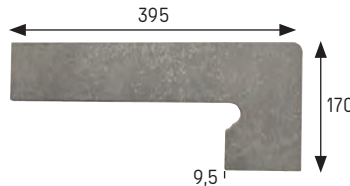
Aranda	Cod. 903371 · [PZ245]
Urbión	Cod. 903383 · [PZ245]
Roa	Cod. 902466 · [PZ245]



[395x80/170 x9,5 mm.]

Zanquín dcha. String right side

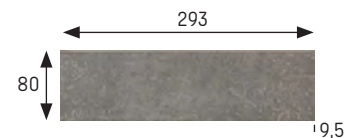
Aranda	Cod. 903372 · [PZ245]
Urbión	Cod. 903384 · [PZ245]
Roa	Cod. 902467 · [PZ245]



[395x80/170 x9,5 mm.]

Rodapié Skirting board

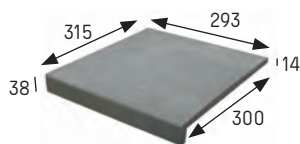
Aranda	Cod. 903370 · [ML225]
Urbión	Cod. 903382 · [ML225]
Roa	Cod. 902468 · [ML225]



[293x80x9,5 mm.]

Peldaño/Vierteaguas Stair-tread/Wash

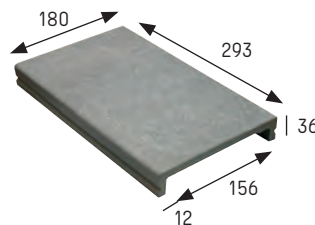
Aranda	Cod. 901551 · [PZ300]
Urbión	Cod. 901552 · [PZ300]
Roa	Cod. 901554 · [PZ300]



[293x315x38 mm.]

Pasamanos 15,5 Handrail 15,5

Aranda	Cod. 903368 · [PZ305]
Urbión	Cod. 903380 · [PZ305]
Roa	Cod. 902470 · [PZ305]



[293x180x36 x12 mm.]



Aranda

	Espesor (mm) Thickness (mm)	U.M.*	U.M./caja U.M./box	U.M./Palet U.M./Pallet	Pzs./U.M. Pcs./U.M.	Pzs./caja Pcs/box	Kg./U.M. Kg./U.M.	Kg./caja Kg./box	Kg./Palet Kg./Pallet
Peldaño 30 Stair-tread 30	14	Pz. Pc.	6	252	1	6	3,1	18,6	781
Peldaño 60 Stair-tread 60	14	Pz. Pc.	4	72	1	4	6,7	26,8	483
Esquina Stair-tread corner	14	Pz. Pc.	2	60	1	2	4,25	8,5	255
Zanquín izda. String left	9,5	Pz. Pc.	20	540	1	20	0,81	16,2	437
Zanquín dcha. String right	9,5	Pz. Pc.	20	540	1	20	0,81	16,2	437
Rodapié Skirting board	9,5	ml lm	10,21	367,57	3,33	34	1,73	17,7	640
Peldaño / Vierendeaguas Stair-tread / Wash	14	Pz. Pc.	8	336	1	8	2,71	21,7	911
Pasamanos 15,5 Handrail 15,5	12	Pz. Pc.	4	288	1	4	1,63	6,5	469

*Unidad de Medida. Los artículos medidos en M² o ML se sirven contando la junta normal entre piezas

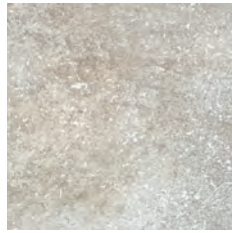
*Unit of measure. Items measured in SQM or LM are delivered assuming average joint between pieces

DUERO Piezas especiales Special pieces

Colores / Colors



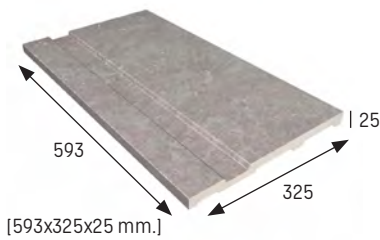
Aranda



Urbión

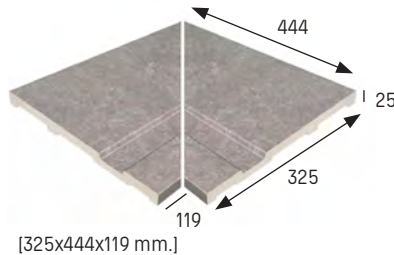
Borde desbordante Overflowing edge

Aranda	Cod. 902123 · [PZ650]
Urbión	Cod. 902122 · [PZ650]



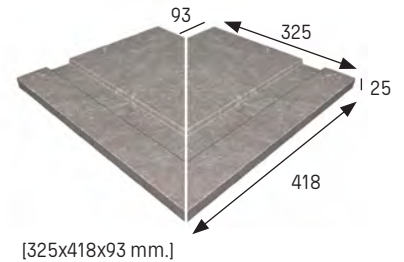
Esq. int. borde desbordante Overflowing internal edge

Aranda	Cod. 902136 · [JG760]
Urbión	Cod. 902134 · [JG760]



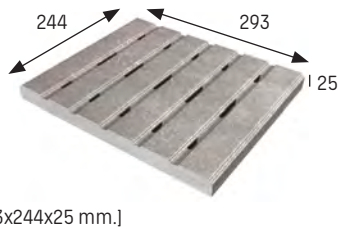
Esq. ext. borde desbordante Overflowing external edge

Aranda	Cod. 902137 · [JG760]
Urbión	Cod. 902135 · [JG760]



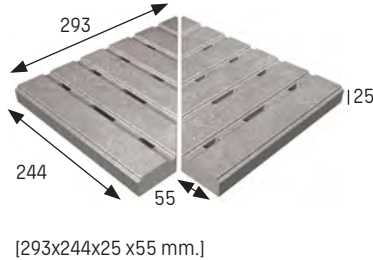
Rejilla cerámica monocompact Monocompact ceramic grid

Aranda	Cod. 902978 · [PZ595]
Urbión	Cod. 902979 · [PZ595]



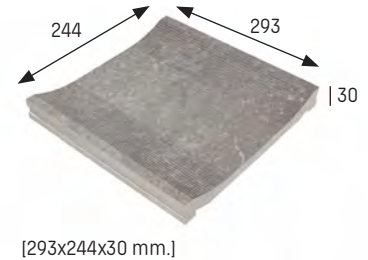
Esquina rejilla Corner grid

Aranda	Cod. 901471 · [JG740]
Urbión	Cod. 901472 · [JG740]



Canaleta* Overflow chanel

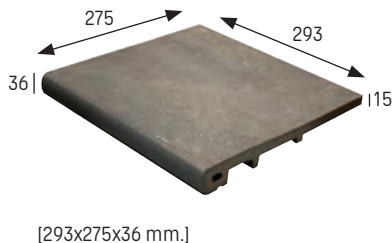
Aranda	Cod. 902131 · [PZ340]
Urbión	Cod. 902130 · [PZ340]



* Disponible Canaleta con desagüe
* Available Overflow channel with drainage

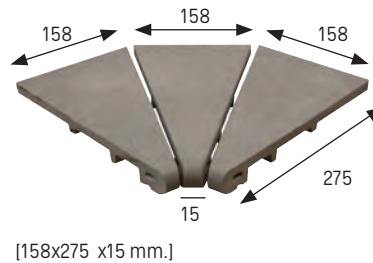
Remate Edge

Aranda	Cod. 903373 · [PZ365]
Urbión	Cod. 903385 · [PZ365]



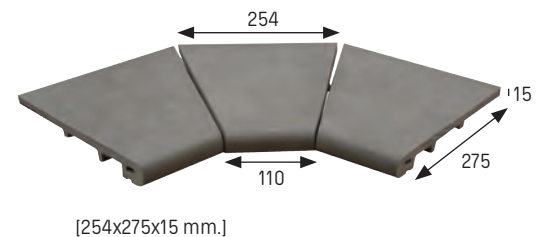
Esq. int. remate R250 Internal corner R250

Aranda	Cod. 903374 · [JG735]
Urbión	Cod. 903386 · [JG735]



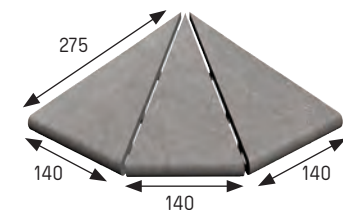
Esq. int. remate R50 Internal corner R50

Aranda	Cod. 902506 · [JG735]
Urbión	Cod. 902505 · [JG735]



Esq. ext. remate External corner

Aranda	Cod. 903375 · [JG735]
Urbión	Cod. 903387 · [JG735]



Anchura recomendada de la junta de colocación: 6 - 8 mm
A 6 - 8 mm wide installation joint is recommended.



Aranda

	Espesor (mm) Thickness (mm)	U.M.*	U.M./caja U.M./box	U.M./Palet U.M./Pallet	Pzs./U.M. Pcs./U.M.	Pzs./caja Pcs/box	Kg./U.M. Kg./U.M.	Kg./caja Kg./box	Kg./Palet Kg./Pallet
Borde desbordante Overflowing edge	25	Pz. Pc.	4	72	1	4	7,59	30,36	547,2
Esq. int. borde desbordante Overflowing internal edge	25	Jg. Set	2	-	2	4	7	14	-
Esq. ext. borde desbordante Overflowing external edge	25	Jg. Set	2	-	2	4	7	14	-
Rejilla cerámica monocompact Monocompact ceramic grid	25	Pz. Pc.	6	378	1	6	3,41	20,5	-
Esquina rejilla Corner grid	25	Set Set	3	-	2	6	4	12	-
Canaleta Overflow channel	30	Pz. Pc.	4	288	1	4	2,5	10,2	734
Remate Edge	15	Pz. Pc.	4	288	1	4	3,3	13,2	950
Esq. int. remate R250 Internal corner R250	15	Set Set	1	-	3	3	5,7	5,7	-
Esq. int. remate R50 Internal corner R50	15	Set Set	2	-	3	6	3,30	6,60	-
Esq. ext. remate External corner	15	Set Set	2	-	3	6	2,31	4,6	-

*Unidad de Medida. Los artículos medidos en M² o ML se sirven contando la junta normal entre piezas

*Unit of measure. Items measured in SQM or LM are delivered assuming average joint between pieces