



# CEMENT TILE



The cement tile - also called mosaic-tile - was born in 1850 in the French region of Ardèche. It was back then an original and solid solution way less expensive than marble and stone.



It is handmade following a revolutionary process discovered by Etienne Larnande: hydraulic lime mixed with calcinated clay, sand and water becomes a material as hard as stone without being heated.



A liquid mortar made of pigments, marble powder and grey or white cement is poured into a mould using a funnel. There is an infinite number of combinations thanks to mould dividers and a large range

of colours. The tile is hand pressed then un moulded by hand. It stays out in the sun for three weeks for it to dry.

Cement tiles and their bold colours are beautiful in a modern interior while adding a little rustic touch. Follow your heart to get a very unique tile to decorate the house of your dreams. ■





# BASE TILES

Tiles 20 x 20 cm  
Thickness: 16 mm  
25 pieces/m<sup>2</sup>



WHITE  
TRC2020UA9 IID M



LIGHT GREY  
TRC2020UA6 IID M



DARK GREY  
TRC2020UA3 IID M



BEIGE  
TRC2020UC5 IID M



PINK  
TRC2020UE7 IID M



RED  
TRC2020UE4 IID M



MAJORELLE BLUE  
TRC2020UB7 IID M



BLUE  
TRC2020UB1 IID M



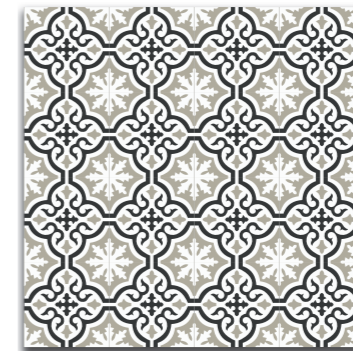
BLACK  
TRC2020UA1 IID M

# DESIGNS

Tiles 20 x 20 cm  
Thickness: 16 mm



CÉLINE  
TRC2020C367 2F P



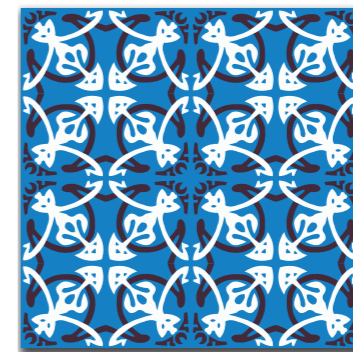
JESSICA  
TRC2020C269 2F P



JADE  
TRC2020C151 2F P



MATHILDE  
TRC2020C146 2F P



MILA  
TRC2020C125 2F P



CORINNE  
TRC2020C124 2F P



MANON  
TRC2020C111 2F P

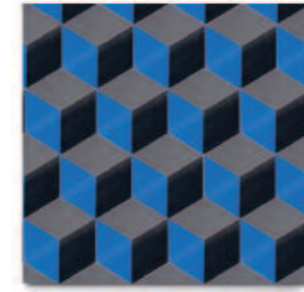






CEMENT TILE  
DESIGNS

Tiles 20 x 20 cm  
Thickness: 16 mm



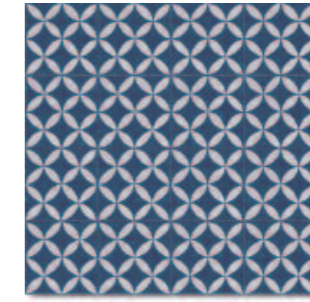
CAROLINE  
TRC2020CH01  
2F P



YVETTE  
TRC2020C271  
2F P



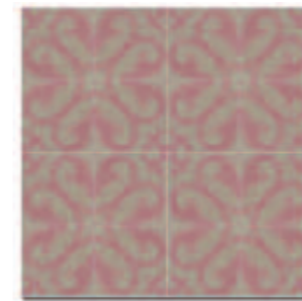
CHLOE  
TRC2020C272  
2F P



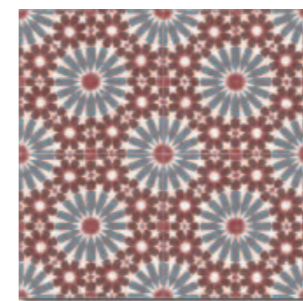
SOPHIE  
TRC2020C154  
2F P



ANNE-CARO  
TRC2020C237  
2F P



GLADYS  
TRC2020C286  
2F P



MAURINE  
TRC2020C243  
2F P



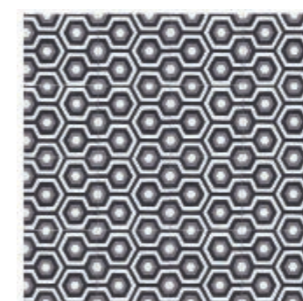
CAROLE  
TRC2020C249  
2F P



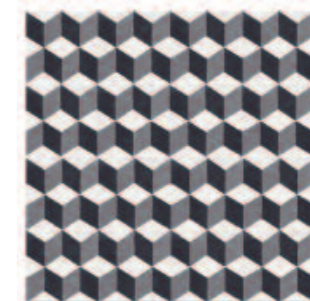
LÉA  
TRC2020C232  
2F P



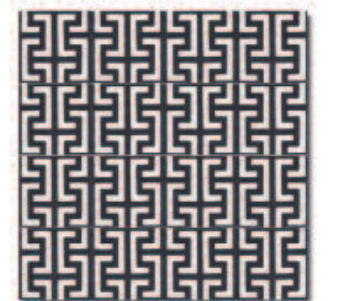
MARTINE  
TRC2020C349  
2F P



JOSÉPHINE  
TRC2020C170  
2F P



SÉVERINE  
TRC2020C179  
2F P



ALICE  
TRC2020C280  
2F P